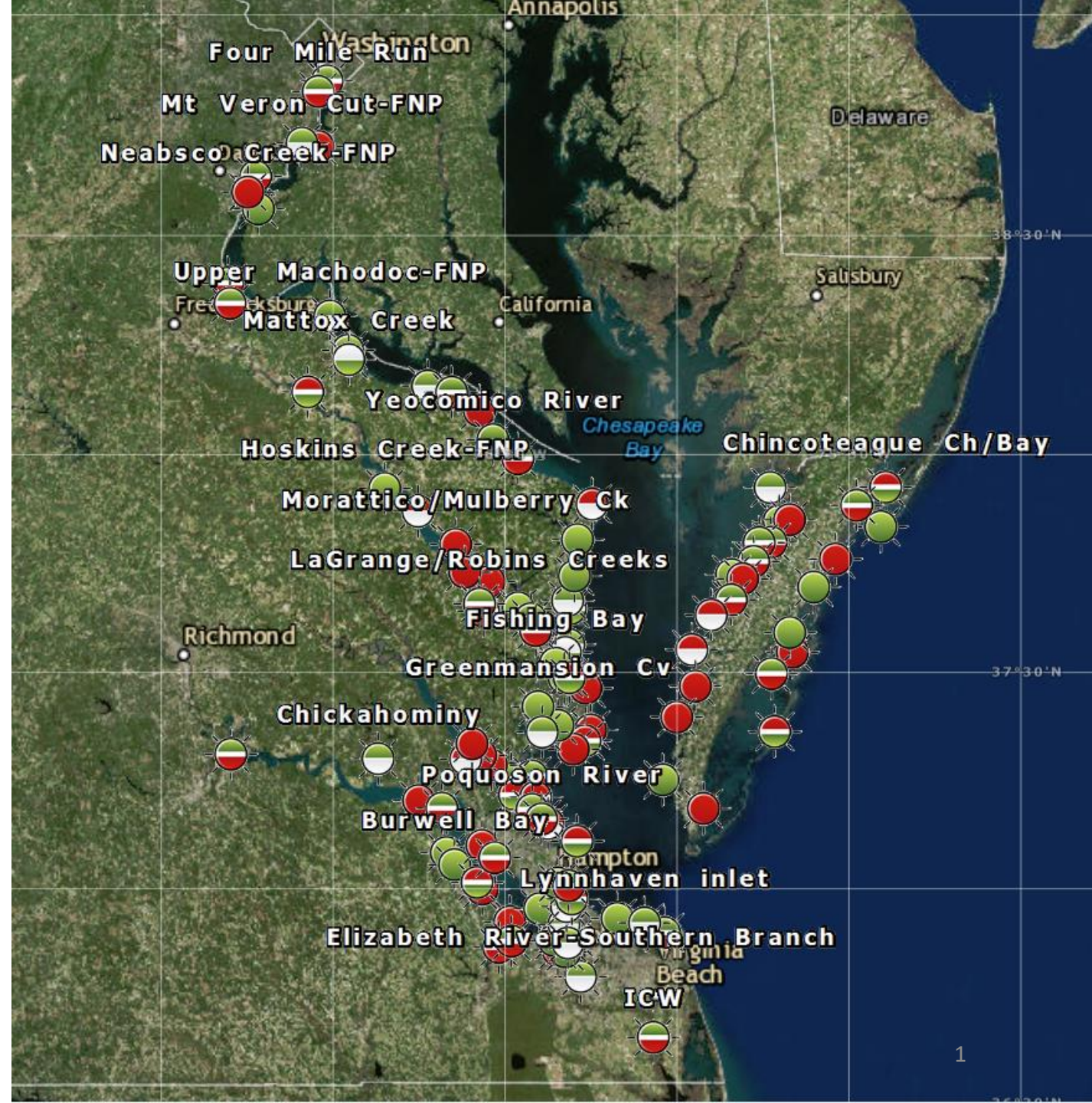
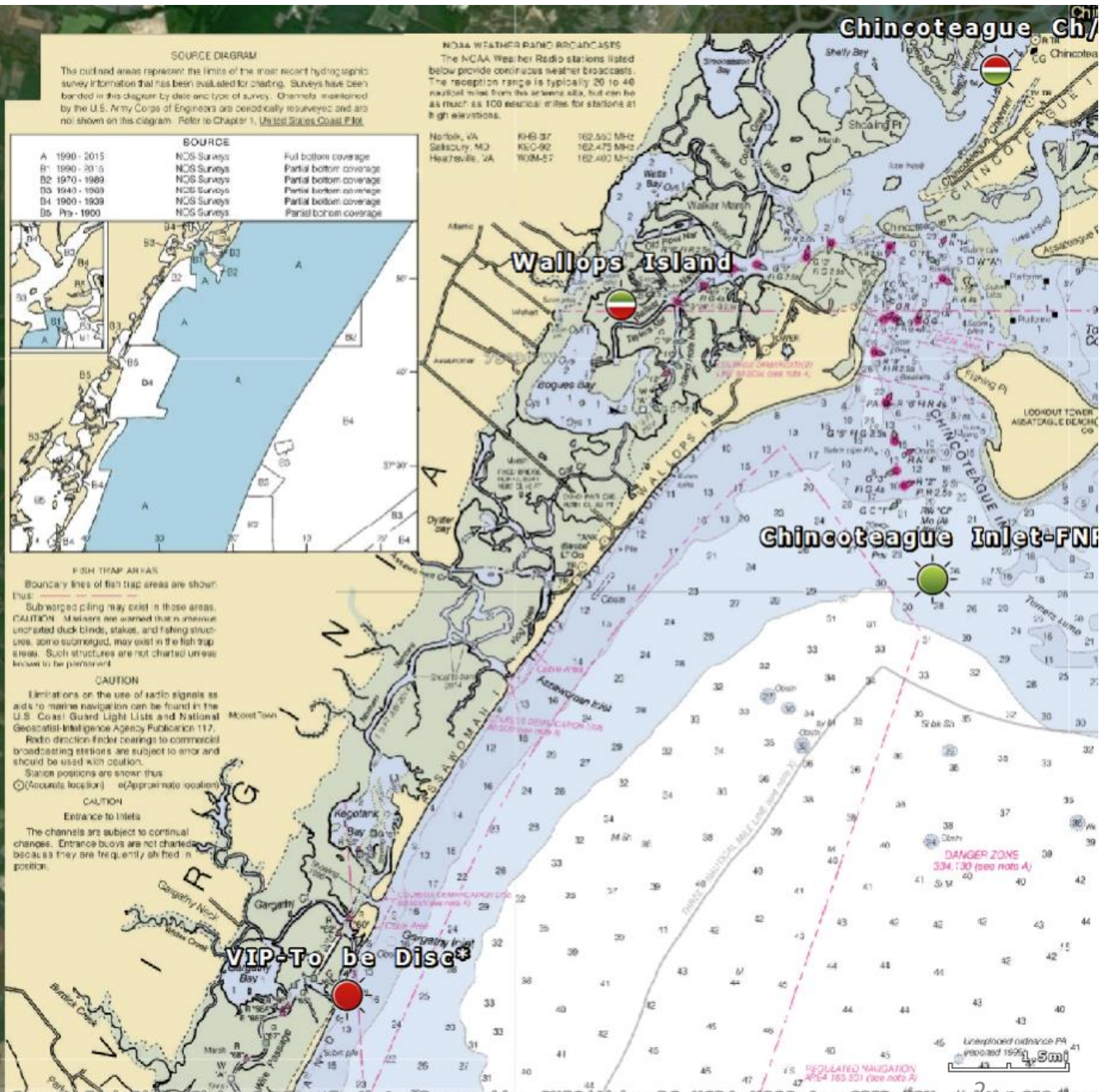
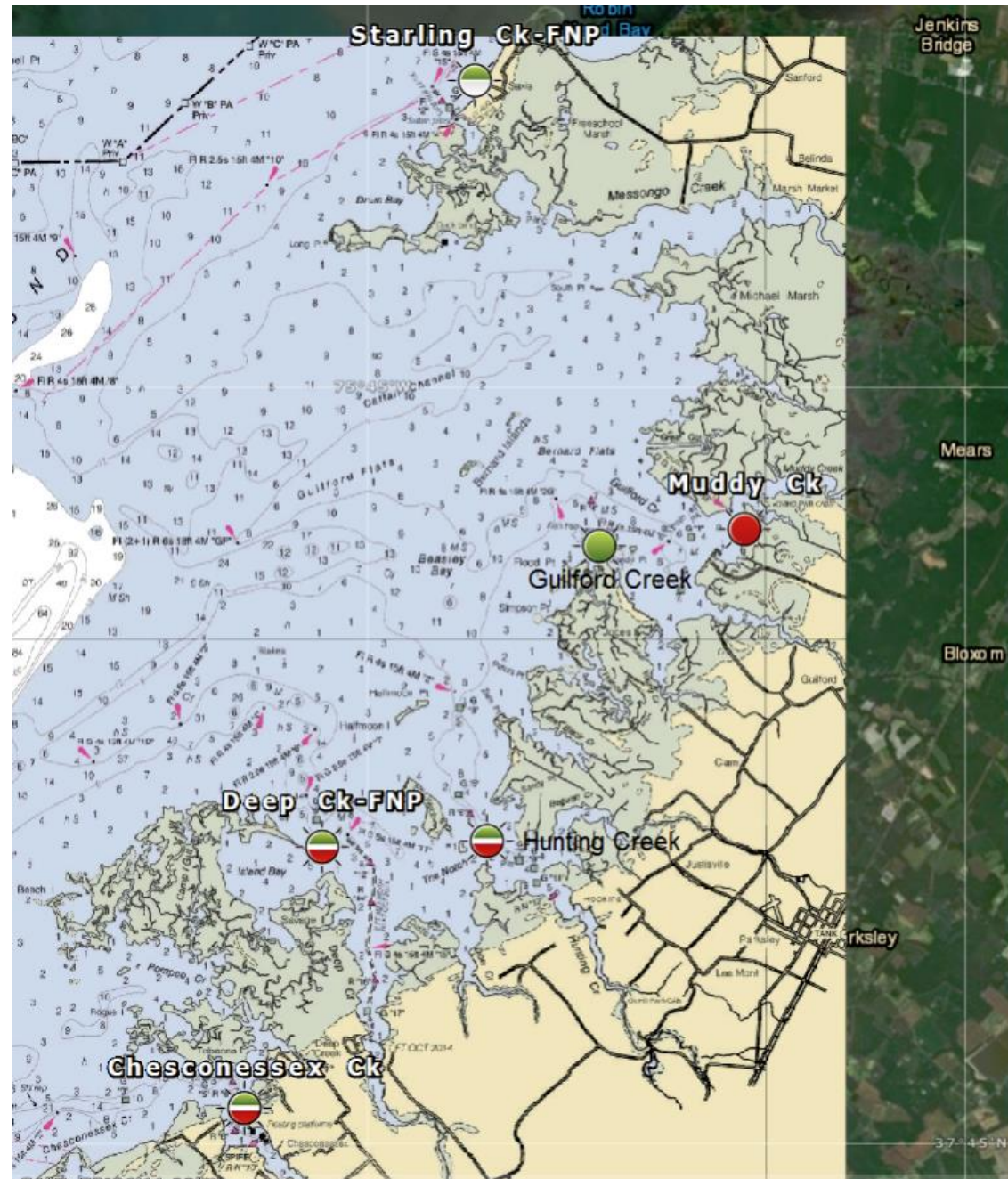


U.Ss Coast Guard's Federal ATON Assessment of Virginia Waterways

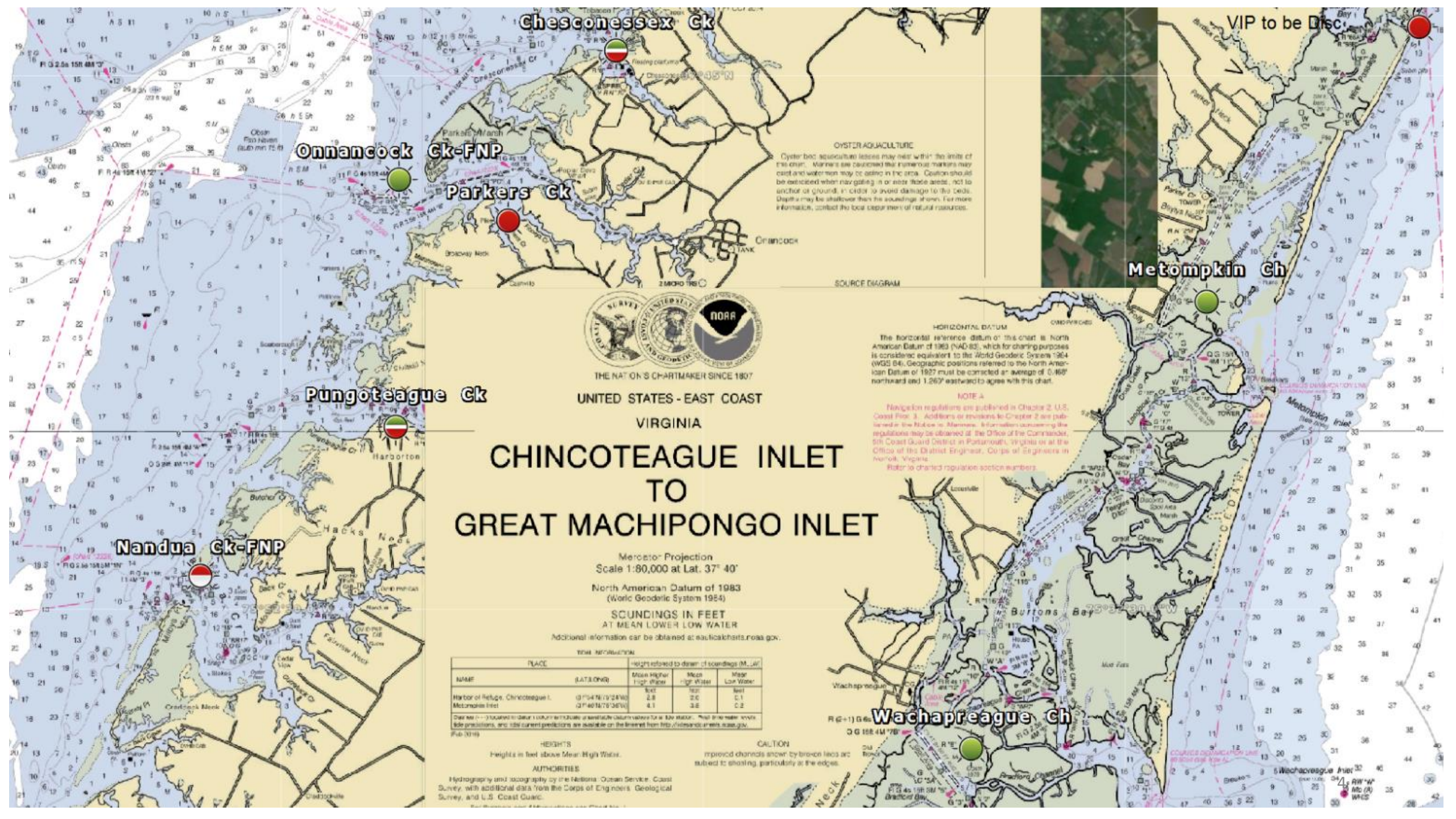
This 43-page assessment was compiled to provide a consolidated list of the status of federal ATON in Virginia Waterways. The information in this assessment will be used to assist the Coast Guard with managing the federal ATONs in Virginia's waterways based on water depths/shoaling that are considered stable, moderate, or severe. The key below provides symbology used on these charts.

Key for Charts	
Meaning	Symbol
Federal navigation project	FNP
Best Water	BW
Waterway is stable	Green
Waterway is shoaled in	Red
The waterway's entrance is stable but the end is shoaled in	Green over Red
The waterway's entrance is shoaled in but the end is stable	Red over Green
The waterway is shoaled in but there is a project ongoing	Red over White





Virginia Chart A (Read Bay side North to South then Ocean Side North to South)			
Waterway (WW)	WW Type	Depth (ft)	Notes
Starling Creek (VA)	FNP	6	Coast Guard asset cannot access all of this waterway, under review
Muddy Creek (VA)	BW	6 to 3	Coast Guard asset cannot access all of this waterway, under review
Guilford Creek (VA)	BW	Not less than 6	No issues
Hunting Creek (VA)	BW	10 to less than 5	There is shoaling at entrance of this waterway, currently under review
Deep Creek (VA)	FNP	8	There is shoaling at entrance of this waterway, currently under review
Chessconessex Creek (VA)	BW	14 to 5	There is shoaling at entrance of this waterway, currently under review
Chincoteague Inner Channel	FNP	+12 to 7.5	This waterway has shoaling in multipul areas and Coast Guard is working with ACE to work around dredging
Wallops Channel	BW	8 to 4	Coast Guard remarked as part of the VIP Discontinuation Project
Chincoteage Inlet	FNP	12+	No issues
VIP	FNP/ BW	1 to 18+	Coast Guard asset cannot access this waterway, currently 45 of 225 shoaled in aids have been removed



Chesconessex Ck

Onnancock Ck-FNP

Parkers Ck

Pungoteague Ck

Nandua Ck-FNP

VIP to be Disc.

Metompkin Ch

Wachapreague Ch



THE NAT. ONS CHARTMAKER SINCE 1807
 UNITED STATES - EAST COAST
 VIRGINIA

CHINCOTEAGUE INLET TO GREAT MACHIPONGO INLET

Mercator Projection
 Scale 1:80,000 at Lat. 37° 40'

North American Datum of 1983
 (World Geodetic System 1984)

SCOUNDINGS IN FEET
 AT MEAN LOWER LOW WATER

Additional information can be obtained at aidscharts.noaa.gov.

HEIGHT INFORMATION

NAME	PLACE (LAT/LONG)	Heights related to datum of soundings (M. Lar)		
		Mean High High Water	Mean High Water	Mean Low Water
Harbor of Refuge, Chincoteague I.	(37°54'N/75°24'W)	2.8	2.0	0.1
Metompkin Inlet	(37°40'N/75°35'W)	4.1	3.5	0.2

Chart No. 11300, 11301, 11302, 11303, 11304, 11305, 11306, 11307, 11308, 11309, 11310, 11311, 11312, 11313, 11314, 11315, 11316, 11317, 11318, 11319, 11320, 11321, 11322, 11323, 11324, 11325, 11326, 11327, 11328, 11329, 11330, 11331, 11332, 11333, 11334, 11335, 11336, 11337, 11338, 11339, 11340, 11341, 11342, 11343, 11344, 11345, 11346, 11347, 11348, 11349, 11350, 11351, 11352, 11353, 11354, 11355, 11356, 11357, 11358, 11359, 11360, 11361, 11362, 11363, 11364, 11365, 11366, 11367, 11368, 11369, 11370, 11371, 11372, 11373, 11374, 11375, 11376, 11377, 11378, 11379, 11380, 11381, 11382, 11383, 11384, 11385, 11386, 11387, 11388, 11389, 11390, 11391, 11392, 11393, 11394, 11395, 11396, 11397, 11398, 11399, 11400, 11401, 11402, 11403, 11404, 11405, 11406, 11407, 11408, 11409, 11410, 11411, 11412, 11413, 11414, 11415, 11416, 11417, 11418, 11419, 11420, 11421, 11422, 11423, 11424, 11425, 11426, 11427, 11428, 11429, 11430, 11431, 11432, 11433, 11434, 11435, 11436, 11437, 11438, 11439, 11440, 11441, 11442, 11443, 11444, 11445, 11446, 11447, 11448, 11449, 11450, 11451, 11452, 11453, 11454, 11455, 11456, 11457, 11458, 11459, 11460, 11461, 11462, 11463, 11464, 11465, 11466, 11467, 11468, 11469, 11470, 11471, 11472, 11473, 11474, 11475, 11476, 11477, 11478, 11479, 11480, 11481, 11482, 11483, 11484, 11485, 11486, 11487, 11488, 11489, 11490, 11491, 11492, 11493, 11494, 11495, 11496, 11497, 11498, 11499, 11500, 11501, 11502, 11503, 11504, 11505, 11506, 11507, 11508, 11509, 11510, 11511, 11512, 11513, 11514, 11515, 11516, 11517, 11518, 11519, 11520, 11521, 11522, 11523, 11524, 11525, 11526, 11527, 11528, 11529, 11530, 11531, 11532, 11533, 11534, 11535, 11536, 11537, 11538, 11539, 11540, 11541, 11542, 11543, 11544, 11545, 11546, 11547, 11548, 11549, 11550, 11551, 11552, 11553, 11554, 11555, 11556, 11557, 11558, 11559, 11560, 11561, 11562, 11563, 11564, 11565, 11566, 11567, 11568, 11569, 11570, 11571, 11572, 11573, 11574, 11575, 11576, 11577, 11578, 11579, 11580, 11581, 11582, 11583, 11584, 11585, 11586, 11587, 11588, 11589, 11590, 11591, 11592, 11593, 11594, 11595, 11596, 11597, 11598, 11599, 11600, 11601, 11602, 11603, 11604, 11605, 11606, 11607, 11608, 11609, 11610, 11611, 11612, 11613, 11614, 11615, 11616, 11617, 11618, 11619, 11620, 11621, 11622, 11623, 11624, 11625, 11626, 11627, 11628, 11629, 11630, 11631, 11632, 11633, 11634, 11635, 11636, 11637, 11638, 11639, 11640, 11641, 11642, 11643, 11644, 11645, 11646, 11647, 11648, 11649, 11650, 11651, 11652, 11653, 11654, 11655, 11656, 11657, 11658, 11659, 11660, 11661, 11662, 11663, 11664, 11665, 11666, 11667, 11668, 11669, 11670, 11671, 11672, 11673, 11674, 11675, 11676, 11677, 11678, 11679, 11680, 11681, 11682, 11683, 11684, 11685, 11686, 11687, 11688, 11689, 11690, 11691, 11692, 11693, 11694, 11695, 11696, 11697, 11698, 11699, 11700, 11701, 11702, 11703, 11704, 11705, 11706, 11707, 11708, 11709, 11710, 11711, 11712, 11713, 11714, 11715, 11716, 11717, 11718, 11719, 11720, 11721, 11722, 11723, 11724, 11725, 11726, 11727, 11728, 11729, 11730, 11731, 11732, 11733, 11734, 11735, 11736, 11737, 11738, 11739, 11740, 11741, 11742, 11743, 11744, 11745, 11746, 11747, 11748, 11749, 11750, 11751, 11752, 11753, 11754, 11755, 11756, 11757, 11758, 11759, 11760, 11761, 11762, 11763, 11764, 11765, 11766, 11767, 11768, 11769, 11770, 11771, 11772, 11773, 11774, 11775, 11776, 11777, 11778, 11779, 11780, 11781, 11782, 11783, 11784, 11785, 11786, 11787, 11788, 11789, 11790, 11791, 11792, 11793, 11794, 11795, 11796, 11797, 11798, 11799, 11800, 11801, 11802, 11803, 11804, 11805, 11806, 11807, 11808, 11809, 11810, 11811, 11812, 11813, 11814, 11815, 11816, 11817, 11818, 11819, 11820, 11821, 11822, 11823, 11824, 11825, 11826, 11827, 11828, 11829, 11830, 11831, 11832, 11833, 11834, 11835, 11836, 11837, 11838, 11839, 11840, 11841, 11842, 11843, 11844, 11845, 11846, 11847, 11848, 11849, 11850, 11851, 11852, 11853, 11854, 11855, 11856, 11857, 11858, 11859, 11860, 11861, 11862, 11863, 11864, 11865, 11866, 11867, 11868, 11869, 11870, 11871, 11872, 11873, 11874, 11875, 11876, 11877, 11878, 11879, 11880, 11881, 11882, 11883, 11884, 11885, 11886, 11887, 11888, 11889, 11890, 11891, 11892, 11893, 11894, 11895, 11896, 11897, 11898, 11899, 11900, 11901, 11902, 11903, 11904, 11905, 11906, 11907, 11908, 11909, 11910, 11911, 11912, 11913, 11914, 11915, 11916, 11917, 11918, 11919, 11920, 11921, 11922, 11923, 11924, 11925, 11926, 11927, 11928, 11929, 11930, 11931, 11932, 11933, 11934, 11935, 11936, 11937, 11938, 11939, 11940, 11941, 11942, 11943, 11944, 11945, 11946, 11947, 11948, 11949, 11950, 11951, 11952, 11953, 11954, 11955, 11956, 11957, 11958, 11959, 11960, 11961, 11962, 11963, 11964, 11965, 11966, 11967, 11968, 11969, 11970, 11971, 11972, 11973, 11974, 11975, 11976, 11977, 11978, 11979, 11980, 11981, 11982, 11983, 11984, 11985, 11986, 11987, 11988, 11989, 11990, 11991, 11992, 11993, 11994, 11995, 11996, 11997, 11998, 11999, 12000.

HEIGHTS
 Heights in feet above Mean High Water.

AUTHORITIES
 Hydrography and topography by the National Ocean Service, Coast Survey, with additional data from the Corps of Engineers, Geological Survey, and U.S. Coast Guard.

OYSTER AQUACULTURE
 Oyster bed acquisition leases may exist within the limits of this chart. Warners are cautioned that potential markers may exist and water men may be active in the area. Caution should be exercised when navigating in or near these areas, not to anchor or ground, in order to avoid damage to the beds. Depths may be shallower than the soundings shown. For more information, contact the local department of natural resources.

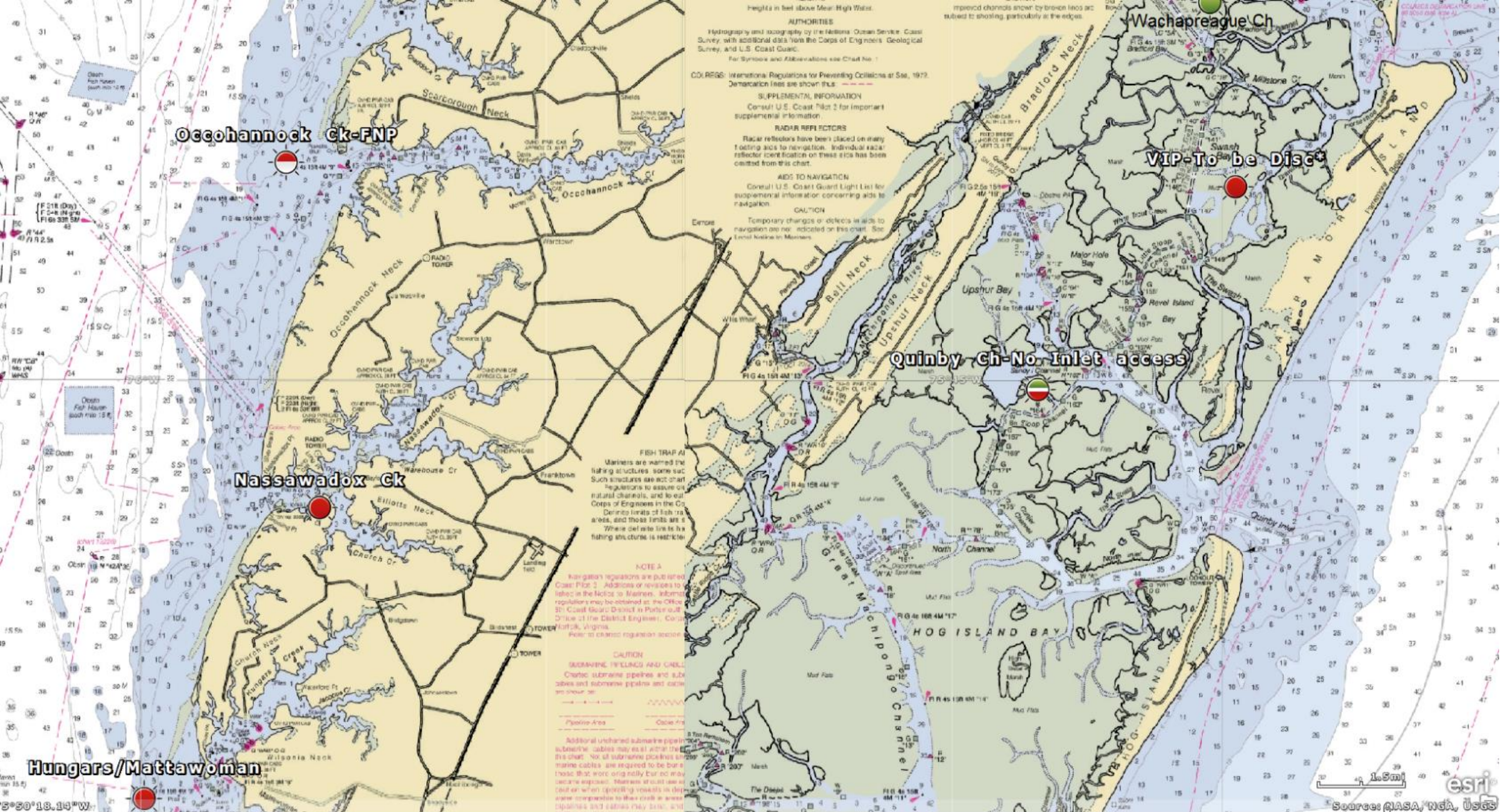
SOURCE DIAGRAM

HORIZONTAL DATUM
 The horizontal reference datum of this chart is North American Datum of 1983 (NAD 83), which for charting purposes is considered equivalent to the World Geodetic System 1984 (WGS 84). Geographic positions referred to the North American Datum of 1983 must be corrected an average of 0.468' northward and 1.267' eastward to agree with this chart.

NOTE A
 Navigation regulations are published in Chapter 2, U.S. Coast Pilot, 3. Additions or revisions to Chapter 2 are published in the Notice to Mariners. Information concerning the regulations may be obtained at the Office of the Commander, 5th Coast Guard District in Portsmouth, Virginia or at the Office of the District Engineer, Corps of Engineers in Norfolk, Virginia.
 Refer to charted regulation section numbers.

CAUTION
 Improved channels shown by broken lines are subject to shoaling, particularly at the edges.

Virginia Chart B (Read Bay side North to South then Ocean Side North to South)			
Waterway (WW)	WW Type	Depth (ft)	Notes
Chessconessex Creek (VA)	BW	14 to 5	There is shoaling at entrance of this waterway, currently under review
Parkers Creek	BW	6 to 2	No issues
Onnanock Creek (VA)	FNP	12	Coast Guard has remarked and relocated aids
Pungoteague Creek	BW	8 to 6	Coast Guard asset cannot access all of this waterway, under review
Nandua Creek	FNP	5	There is shoaling in this waterway, currently under review to potentially reestablish aids
VIP	FNP/ BW	1 to 18+	Coast Guard asset cannot access this waterway, currently 45 of 225 shoaled in aids have been removed
Metompkin Channel	BW	8 to 4	Coast Guard remarked as part of the VIP Discontinuation Project
Wachapreague Channel	BW	8 to 4	Coast Guard remarked as part of the VIP Discontinuation Project



Occohannock Ck-FNP

Nassawadox Ck

Hungars/Mattawoman

Quinby Ch-No Inlet access

Wachapreague Ch

VIP-To be Disc

AUTHORITIES
 Hydrography and topography by the Nations Ocean Service, Coast Survey, with additional data from the Corps of Engineers' Geological Survey, and U.S. Coast Guard.
 For Symbols and Abbreviations see Chart No. 1.

COLORS
 International Regulations for Preventing Collisions at Sea, 1972. Demarcation lines are shown thus: — — — — —

SUPPLEMENTAL INFORMATION
 Consult U.S. Coast Pilot 2 for important supplemental information.

RADAR REFLECTORS
 Radar reflectors have been placed on many floating aids to navigation. Individual radar reflector identification on these aids has been omitted from this chart.

AIDS TO NAVIGATION
 Consult U.S. Coast Guard Light List for supplemental information concerning aids to navigation.

CAUTION
 Temporary changes or defects in aids to navigation are not indicated on this chart. See Local Notice to Mariners.

FISH TRAP AI
 Mariners are warned the fishing structures, some such as such structures are not staffed. Regulations to assure or natural channels, and to east Corps of Engineers in the Co. Define limits of fish tra areas, and those limits are s. Where del into line to fishing structure is restrictio

NOTE A
 Navigational regulations are published Coast Pilot 2. Additions or revisions to listed in the Notice to Mariners. Informa regulations may be obtained at the Offic 5th Coast Guard District in Parker outl Office of the District Engineer, Coast Norfolk, Virginia.
 Refer to charted regulations section.

CAUTION
SUBMARINE PIPELINES AND CABLES
 Charted submarine pipelines and sub cables and submarine pipelines and cable are shown as:
 Pipeline Area Cable Area

Additional uncharted submarine pipeline cables may exist within the this chart. No. of submarine pipelines or marine cables are required to be bur those that were originally bur do may become exposed. Mariners should use caution when operating vessels in these areas. Operators and others may take and

Virginia Chart C (Read Bay side North to South then Ocean Side North to South)			
Waterway (WW)	WW Type	Depth (ft)	Notes
Onnanock Creek (VA)	FNP	12	Coast Guard has remarked and relocated aids
Nassadox Creek	BW	1 to 11	This waterway has shoaling in multipul areas and Coast Guard is working to remove misleading aids
Hungars/Mattawoman	BW	3 to 13	There is shoaling at entrance of this waterway
Wachapreague Channel	BW	8 to 4	Coast Guard remarked as part of the VIP Discontinuation Project
VIP	FNP/ BW	1 to 18+	Coast Guard asset cannot access this waterway, currently 45 of 225 shoaled in aids have been removed
Quinby Channel	FNP/ BW	12 to 5	Coast Guard has remarked after ACE dredged and adjusts aids to keep shoaled areas marked. No access through Inlet

Hungars/Mattawoman

CHESAPEAKE BAY CAPE CHARLES TO WOLF TRAP

Great Machipongo Ch

Cape Charles-FNP

submarine cables may also enter the chart. But all submarine pipelines or marine cables are required to be buried those that were originally buried may become exposed. Markers should use all caution when operating vessels in deep water comparable to their draft in areas pipelines and cables may exist, and anchoring, dredging, or trawling

DEPTH	100	200	300	400	500	600	700	800	900	1000
TEMPERATURE	68.0	64.0	60.0	56.0	52.0	48.0	44.0	40.0	36.0	32.0
WIND VELOCITY	10	15	20	25	30	35	40	45	50	55
WIND DIRECTION	090	090	090	090	090	090	090	090	090	090
WAVE PERIOD	4.0	4.0	4.0	4.0	4.0	4.0	4.0	4.0	4.0	4.0
WAVE HEIGHT	1.0	1.0	1.0	1.0	1.0	1.0	1.0	1.0	1.0	1.0
WAVE DIRECTION	090	090	090	090	090	090	090	090	090	090

DEPTH	100	200	300	400	500	600	700	800	900	1000
TEMPERATURE	68.0	64.0	60.0	56.0	52.0	48.0	44.0	40.0	36.0	32.0
WIND VELOCITY	10	15	20	25	30	35	40	45	50	55
WIND DIRECTION	090	090	090	090	090	090	090	090	090	090
WAVE PERIOD	4.0	4.0	4.0	4.0	4.0	4.0	4.0	4.0	4.0	4.0
WAVE HEIGHT	1.0	1.0	1.0	1.0	1.0	1.0	1.0	1.0	1.0	1.0
WAVE DIRECTION	090	090	090	090	090	090	090	090	090	090

DEPTH	100	200	300	400	500	600	700	800	900	1000
TEMPERATURE	68.0	64.0	60.0	56.0	52.0	48.0	44.0	40.0	36.0	32.0
WIND VELOCITY	10	15	20	25	30	35	40	45	50	55
WIND DIRECTION	090	090	090	090	090	090	090	090	090	090
WAVE PERIOD	4.0	4.0	4.0	4.0	4.0	4.0	4.0	4.0	4.0	4.0
WAVE HEIGHT	1.0	1.0	1.0	1.0	1.0	1.0	1.0	1.0	1.0	1.0
WAVE DIRECTION	090	090	090	090	090	090	090	090	090	090

Virginia Chart D (Read Bay side North to South then Ocean Side North to South)			
Waterway (WW)	WW Type	Depth (ft)	Notes
Hungars/Mattawoman	BW	3 to 13	There is shoaling at entrance of this waterway
Cape Charles	FNP	12	No issues
Great Machipongo Channel	BW	2 to 24	On going project to mark this shoaled waterway and Inlet

Cape Charles-FNP



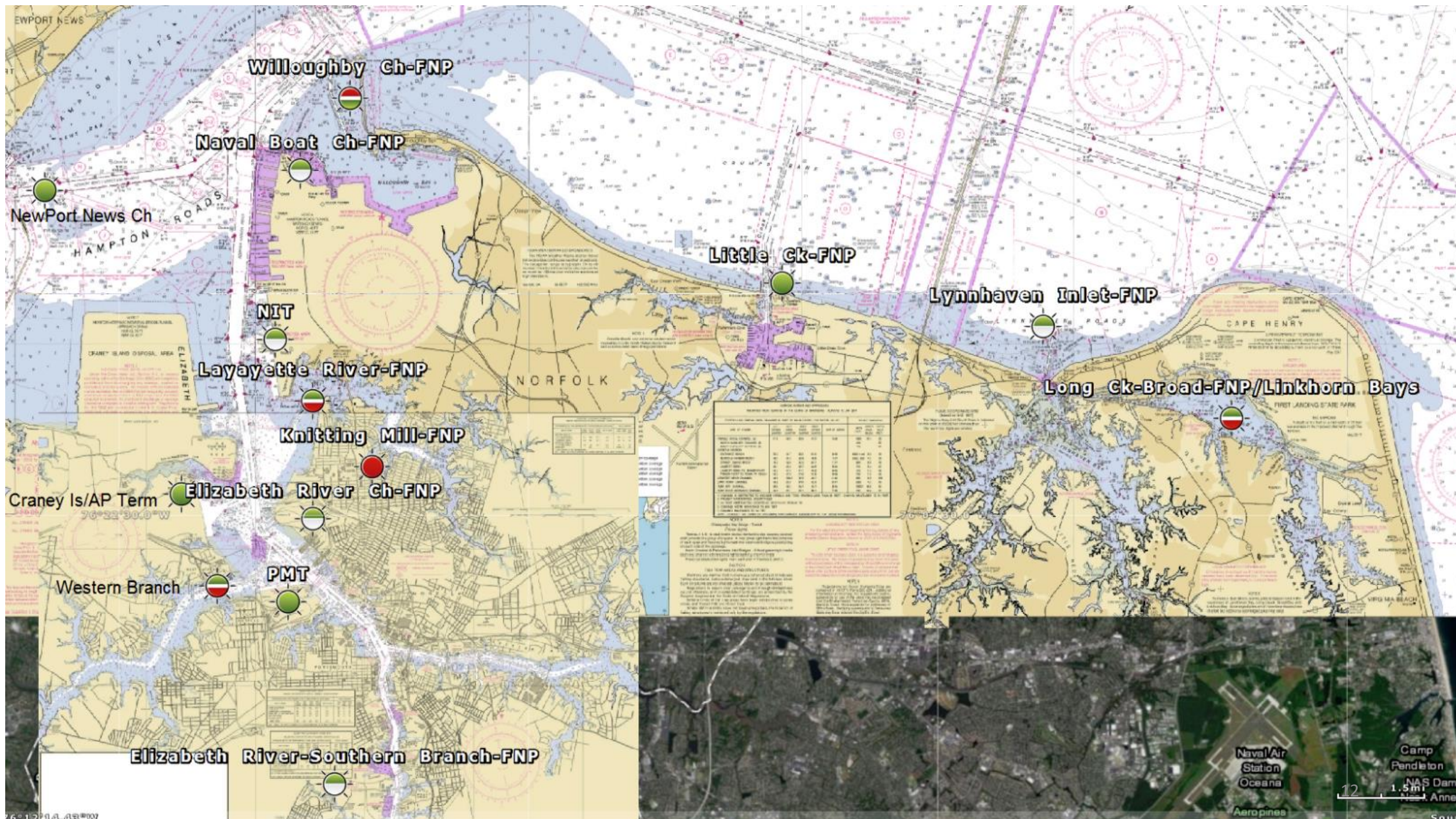
VIP-To be Disc*



SOUNDINGS	
1	100 fathoms
2	200 fathoms
3	300 fathoms
4	400 fathoms
5	500 fathoms
6	600 fathoms
7	700 fathoms
8	800 fathoms
9	900 fathoms
10	1000 fathoms



Virginia Chart E (Read Bay side North to South then Ocean Side North to South)			
Waterway (WW)	WW Type	Depth (ft)	Notes
Cape Charles	FNP	12	No issues
VIP	FNP/ BW	1 to 18+	Coast Guard asset cannot access this waterway, currently 45 of 225 shoaled in aids have been removed



Virginia Chart F (read from East to West along shoreline)			
Waterway (WW)	WW Type	Depth (ft)	Notes
Lynnhaven Inlet-Long Creek	FNP/ BW	9 to 5	There is shoaling at end of this waterway
Lynnhaven Inlet	FNP	10	The waterway is stable and under review
Little Creek	FNP	22	No issues
Willoughby Channel	FNP	10	There is shoaling at entrance of this waterway
Naval Boat Channel	FNP	7	The waterway is stable and under review
NIT	VPA	45	the waterway is currently being dredged,realigned, and remarked
Lafayette River	FNP/ BW	7	Coast Guard asset cannot access past under bridge
Lafayette River-Knitting Mill	FNP	6	There is shoaling at entrance of this waterway
Elizabeth River Ch	FNP	45	This waterway is currently being dredged
Elizabeth River Ch-Southern	FNP	25	The waterway is stable and under review
PMT	VPA	45	the waterway is currently being dredged, realigned, and remarked
Western Branch Ch	FNP/ BW	8	Coast Guard assest cannot access past under bridge
Craney Island	CG	20	No issues
Newport News Ch	FNP	45	No issues

NO. OF SHEETS	DATE	BY	REVISION
1	1983	USCG	1
1	1984	USCG	2
1	1985	USCG	3
1	1986	USCG	4
1	1987	USCG	5
1	1988	USCG	6
1	1989	USCG	7
1	1990	USCG	8
1	1991	USCG	9
1	1992	USCG	10
1	1993	USCG	11
1	1994	USCG	12
1	1995	USCG	13
1	1996	USCG	14
1	1997	USCG	15
1	1998	USCG	16
1	1999	USCG	17
1	2000	USCG	18
1	2001	USCG	19
1	2002	USCG	20
1	2003	USCG	21
1	2004	USCG	22
1	2005	USCG	23
1	2006	USCG	24
1	2007	USCG	25
1	2008	USCG	26
1	2009	USCG	27
1	2010	USCG	28
1	2011	USCG	29
1	2012	USCG	30
1	2013	USCG	31
1	2014	USCG	32
1	2015	USCG	33
1	2016	USCG	34
1	2017	USCG	35
1	2018	USCG	36
1	2019	USCG	37
1	2020	USCG	38
1	2021	USCG	39
1	2022	USCG	40

Pagan River-FNP



Jones Ck



Hampton Ck



Phoebus Ch-FNP



Willoughby Ch-FNP



Naval Boat Ch-FNP



NewPort News Ch



Batten Bay



Layette River-FNP



Knitting Mill-FNP



Craney Is/Ap Term



Elizabeth River Ch-FNP



Nansemond River



Western Branch



PMT



UNITED STATES - EAST COAST
CHESAPEAKE BAY - VIRGINIA

JAMES RIVER

NEWPORT NEWS TO JAMESTOWN ISLAND

Vertical Projection
Scale 1:62,500 at Lat. 37° 01'
North American Datum of 1983

Soundings in Feet
at Mean Low Water, unless noted.

ABBREVIATION TABLE
The Abbreviations used in this chart are given in the following table. The symbols used in this chart are given in the following table. The symbols used in this chart are given in the following table.

SOUNDINGS		DEPTH	
0	100	100	100
1	200	200	200
2	300	300	300
3	400	400	400
4	500	500	500
5	600	600	600
6	700	700	700
7	800	800	800
8	900	900	900
9	1000	1000	1000
10	1100	1100	1100
11	1200	1200	1200
12	1300	1300	1300
13	1400	1400	1400
14	1500	1500	1500
15	1600	1600	1600
16	1700	1700	1700
17	1800	1800	1800
18	1900	1900	1900
19	2000	2000	2000
20	2100	2100	2100
21	2200	2200	2200
22	2300	2300	2300
23	2400	2400	2400
24	2500	2500	2500
25	2600	2600	2600
26	2700	2700	2700
27	2800	2800	2800
28	2900	2900	2900
29	3000	3000	3000
30	3100	3100	3100
31	3200	3200	3200
32	3300	3300	3300
33	3400	3400	3400
34	3500	3500	3500
35	3600	3600	3600
36	3700	3700	3700
37	3800	3800	3800
38	3900	3900	3900
39	4000	4000	4000
40	4100	4100	4100
41	4200	4200	4200
42	4300	4300	4300
43	4400	4400	4400
44	4500	4500	4500
45	4600	4600	4600
46	4700	4700	4700
47	4800	4800	4800
48	4900	4900	4900
49	5000	5000	5000
50	5100	5100	5100
51	5200	5200	5200
52	5300	5300	5300
53	5400	5400	5400
54	5500	5500	5500
55	5600	5600	5600
56	5700	5700	5700
57	5800	5800	5800
58	5900	5900	5900
59	6000	6000	6000
60	6100	6100	6100
61	6200	6200	6200
62	6300	6300	6300
63	6400	6400	6400
64	6500	6500	6500
65	6600	6600	6600
66	6700	6700	6700
67	6800	6800	6800
68	6900	6900	6900
69	7000	7000	7000
70	7100	7100	7100
71	7200	7200	7200
72	7300	7300	7300
73	7400	7400	7400
74	7500	7500	7500
75	7600	7600	7600
76	7700	7700	7700
77	7800	7800	7800
78	7900	7900	7900
79	8000	8000	8000
80	8100	8100	8100
81	8200	8200	8200
82	8300	8300	8300
83	8400	8400	8400
84	8500	8500	8500
85	8600	8600	8600
86	8700	8700	8700
87	8800	8800	8800
88	8900	8900	8900
89	9000	9000	9000
90	9100	9100	9100
91	9200	9200	9200
92	9300	9300	9300
93	9400	9400	9400
94	9500	9500	9500
95	9600	9600	9600
96	9700	9700	9700
97	9800	9800	9800
98	9900	9900	9900
99	10000	10000	10000

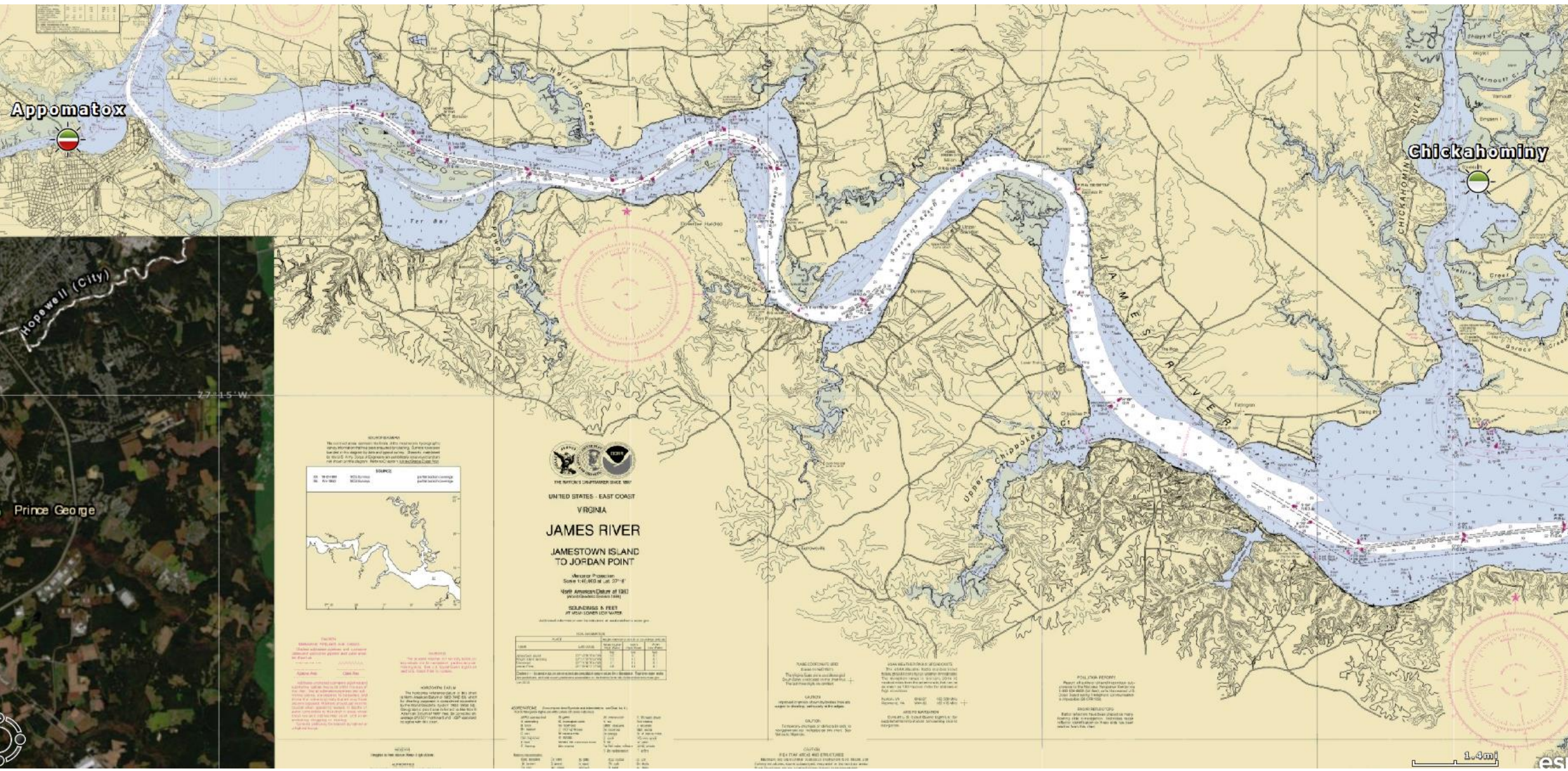
CONTINUATION OF
NANSEMOND RIVER

Scale 1:62,500

The continuation of the Nansemond River is shown in this chart. The symbols used in this chart are given in the following table.

Virginia Chart G (read Northeast to West along shoreline)			
Waterway (WW)	WW Type	Depth (ft)	Notes
Hampton Creek	FNP	12	No issues
Phobus Ch	FNP	13	There is shoaling at end of this waterway
Naval Boat Channel	FNP	7	The waterway is stable and under review
NIT	VPA	45	the waterway is currently being dredged,realigned, and remarked
Lafayette River	FNP/ BW	7	Coast Guard assest cannot access past under bridge
Lafayette River-Knitting Mill	FNP	6	There is shoaling at entrance of this waterway
Elizabeth River Ch	FNP	45	This waterway is currently being dredged
Elizabeth River Ch-Southern	FNP	25	The waterway is stable and under review
PMT	VPA	45	the waterway is currently being dredged,realigned, and remarked
Western Branch Ch	FNP/ BW	8	Coast Guard assest cannot access past under bridge
Craney Island	CG	20	No issues
Benett Creek	FNP	6	This waterway is narrow and some shoaling, ACE and partners preparing to dredge
Nansemound River	BW	22 to 4	There is shoaling at end of this waterway
Batten Bay	BW	2 to 20+	This waterway has shoaling
Jones Creek	BW	2 to 8	This waterway has shoaling
Pangan River	FNP	10	The entrance of the waterway is shoaled

Virginia Chart H (read Southeast to Northwest traveling up the river)			
Waterway (WW)	WW Type	Depth (ft)	Notes
Burwell Bay	BW	10 to 25	No issues
Deep Creek	FNP	8	There is shoaling at end of this waterway
Tylers Beach	FNP	6	No issues
Warwick Creek	BW	1 to 8	This waterway has shoaling
James River	FNP/ BW	25	The ACE is trying to maintain to good depths until 22/23
Jamestown Island	BW	1 to 5	This waterway has shoaling



Appomattox

Chickahominy

Hopewell (City)

Prince George

77°45'W



UNITED STATES - EAST COAST
VIRGINIA

JAMES RIVER
JAMESTOWN ISLAND
TO JORDAN POINT

Scale of Projection:
Scale 1:62,500 (Lat. 37°-8'
North American Datum of 1983)
(NAD 83) (Datum: Geoid 1984)

SCALEBAR & FEET
OF SEA LEVEL (CGN 100)

Additional information on the back of this chart is available at www.nauticalcharts.noaa.gov



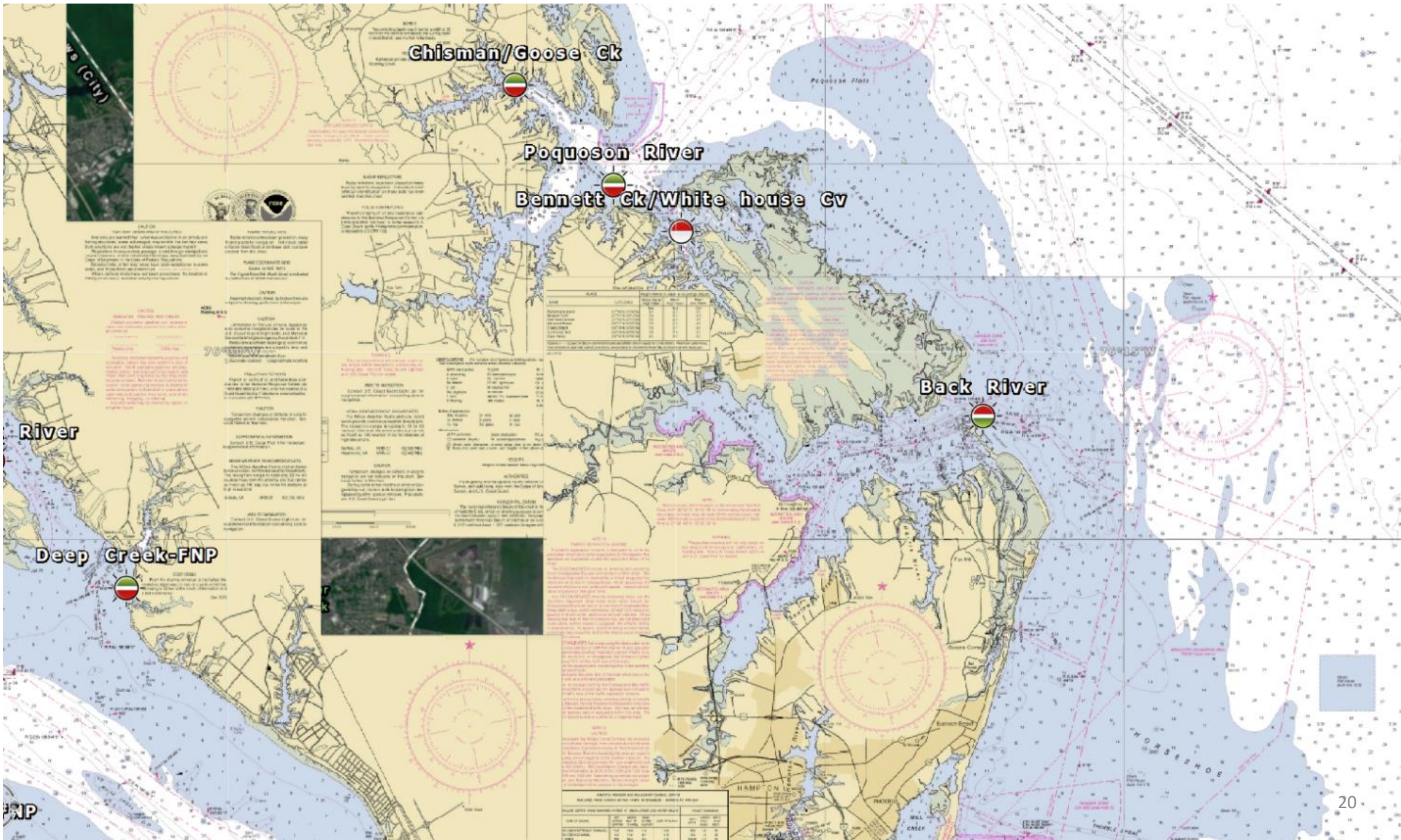
NAME	DEPTH	DEPTH IN FEET	DEPTH IN METERS
1	10	10	3.0
2	15	15	4.5
3	20	20	6.0
4	25	25	7.5
5	30	30	9.0
6	35	35	10.5
7	40	40	12.0
8	45	45	13.5
9	50	50	15.0
10	55	55	16.5
11	60	60	18.0
12	65	65	19.5
13	70	70	21.0
14	75	75	22.5
15	80	80	24.0
16	85	85	25.5
17	90	90	27.0
18	95	95	28.5
19	100	100	30.0

NAME	DEPTH	DEPTH IN FEET	DEPTH IN METERS
1	10	10	3.0
2	15	15	4.5
3	20	20	6.0
4	25	25	7.5
5	30	30	9.0
6	35	35	10.5
7	40	40	12.0
8	45	45	13.5
9	50	50	15.0
10	55	55	16.5
11	60	60	18.0
12	65	65	19.5
13	70	70	21.0
14	75	75	22.5
15	80	80	24.0
16	85	85	25.5
17	90	90	27.0
18	95	95	28.5
19	100	100	30.0

1.4mi



Virginia Chart I (read East to West traveling up the river)			
Waterway (WW)	WW Type	Depth (ft)	Notes
Chickahominy River	BW	6+	The waterway is stable and under review
Appomatox River	FNP/ BW	20 to 5	There is shoaling in upper section of this waterway



Chisman/Goose Ck

Poquoson River

Bennett Ck/White house Cv

Back River

River

Deep Creek-FNP

FNP



NOTICE TO MARINERS
 This notice contains information regarding the status of the chart and the accuracy of the data. It is intended for the use of mariners and is not to be construed as a guarantee of accuracy. The chart is based on the best available information and is subject to change without notice. Mariners are advised to check the status of the chart and the accuracy of the data before using it for navigation.

CHART INFORMATION
 This chart is based on the best available information and is subject to change without notice. Mariners are advised to check the status of the chart and the accuracy of the data before using it for navigation.

COAST GUARD
 The Coast Guard is responsible for the safety of navigation and the enforcement of maritime laws. It is advised that mariners should always follow the rules of the road and maintain a proper lookout.

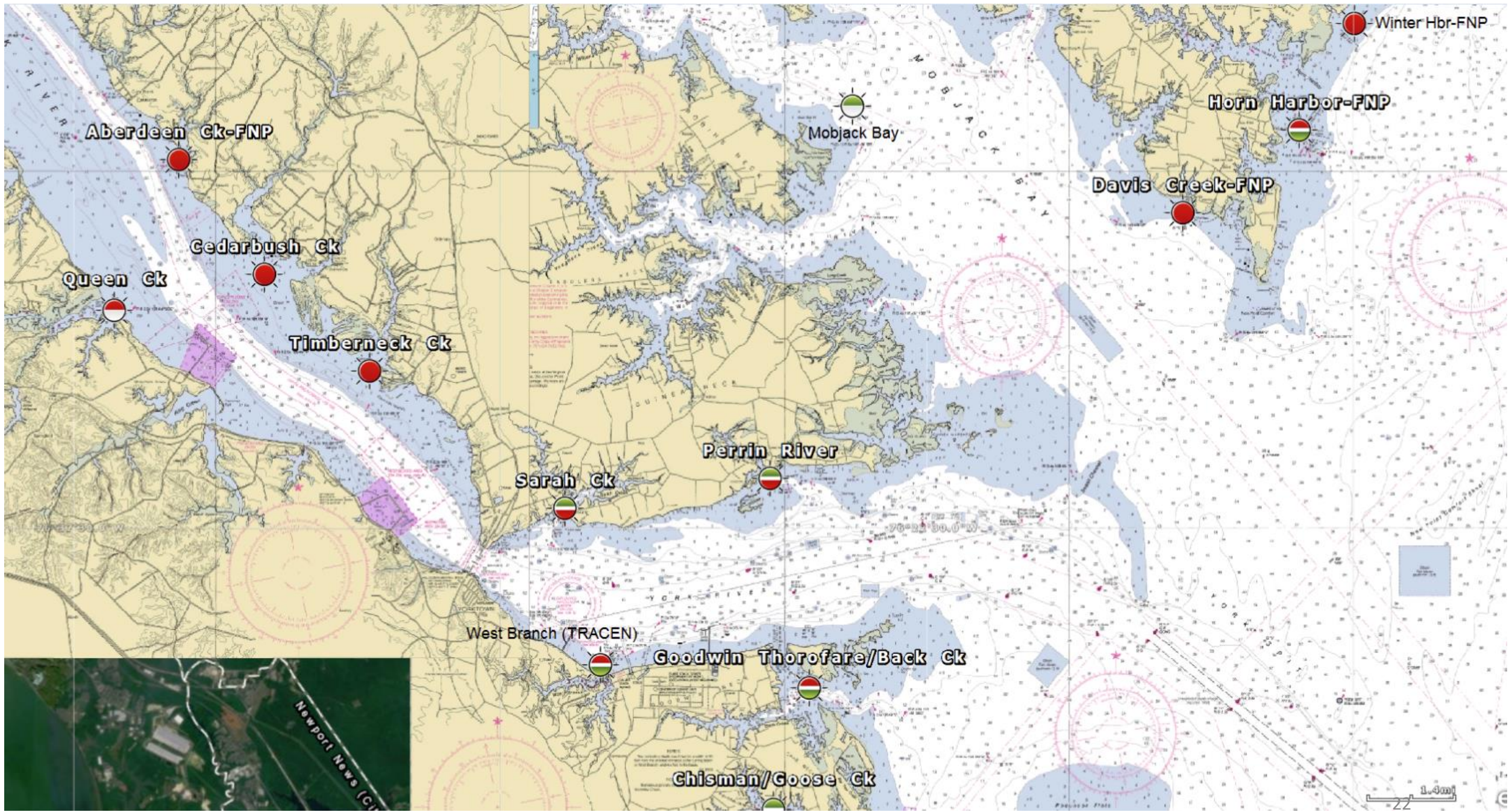
NAVIGATION
 Mariners are advised to use the chart and the information provided in this notice to navigate safely. It is important to check the status of the chart and the accuracy of the data before using it for navigation.

ADDITIONAL INFORMATION
 For more information, please contact the National Oceanic and Atmospheric Administration (NOAA) or the Coast Guard.

NAME	CLASS	HEIGHT	CHARACTER	REMARKS
1	Light	10	Fl	White
2	Light	10	Fl	White
3	Light	10	Fl	White
4	Light	10	Fl	White
5	Light	10	Fl	White
6	Light	10	Fl	White
7	Light	10	Fl	White
8	Light	10	Fl	White
9	Light	10	Fl	White
10	Light	10	Fl	White

NAME	CLASS	HEIGHT	CHARACTER	REMARKS
1	Light	10	Fl	White
2	Light	10	Fl	White
3	Light	10	Fl	White
4	Light	10	Fl	White
5	Light	10	Fl	White
6	Light	10	Fl	White
7	Light	10	Fl	White
8	Light	10	Fl	White
9	Light	10	Fl	White
10	Light	10	Fl	White

Virginia Chart J (read South to North traveling up the coast, excluding Deep Creek as it is in section Va WWH)			
Waterway (WW)	WW Type	Depth (ft)	Notes
Back River	BW	4 to 20+	This waterway has Shifting Shoals and we are working with ACE/NOAA to best mark
Bennett Creek/White House Cove	BW	7 to 4	There is limited access to this waterway and there are plans to remove three aids
Poquoson River	BW	20 to 4	There is shoaling at end of this waterway
Chisman/Goose Creek	BW	8 to 2	Shifting shoals have limited the Coast Guard's access to the Waterway prompting a review of the waterway, results pending



Virginia Chart K (read South to North traveling up the coast)			
Waterway (WW)	WW Type	Depth (ft)	Notes
Chisman/Goose Creek	BW	8 to 2	Shifting shoals have limited the Coast Guard's access to the Waterway prompting a review of the waterway, results pending
Goodwin Thorofare	FNP	5	The aids in this waterway have been converted to Warning daybeacons and pending removal
West Branch (Wormly Ck)	CG	10	When this waterway is dredged Coast Guard will re-evaluate establishing new entrance aid
Queen Creek-York River	BW	5 to 12	The entrance to this waterway is shoaled in and work has begun on removing misleading aids
Aberdeen Ck	FNP	5	This waterway has been shoaled in
Cedarbush Creek	BW	4 to 7	This waterway has been shoaled in
Timberneck Creek-	BW	4 to 7	This waterway has been shoaled in
Sarah Creek-	BW	10 to 5	This waterway contains shifting shoals and is currently under review
Perrin River	BW	9 to 6	This waterway contains shifting shoals
Mobjack Bay*	BW	+6	There has been minor aid adjustments to mark best water within the bay
Davis Creek (Mobjack Bay)	FNP	8 to 1.7	Working with the local government to convey aids, there is severe shoaling within the waterway
Horn Harbor	FNP	5 to 7	Due to the entrance of this waterway shoaling in the Coast Guard has begun a review
Winter Harbor	FNP	less than 5	All aids have been removed due to severe shoaling

YORK RIVER

YORKTOWN TO WEST POINT

NO. 1000
Scale 1:62,500 at 1:25,000
First Edition 1950
Second Edition 1960
Third Edition 1970
Fourth Edition 1980
Fifth Edition 1990

NOTES
1. This chart is a reproduction of the original chart published by the Hydrographic Office, U.S. Navy, and is published by permission of the U.S. Navy.

PROVISIONAL DATA
The information on this chart is based on the original chart and is subject to change without notice. It is not to be used for navigation purposes unless it is accompanied by the original chart or a copy of the original chart.

ADVERTISED INFORMATION
This chart is published by the Hydrographic Office, U.S. Navy, and is published by permission of the U.S. Navy.

COPIES
This chart is published by the Hydrographic Office, U.S. Navy, and is published by permission of the U.S. Navy.

REVISIONS
This chart is published by the Hydrographic Office, U.S. Navy, and is published by permission of the U.S. Navy.

ABBREVIATIONS
This chart is published by the Hydrographic Office, U.S. Navy, and is published by permission of the U.S. Navy.

SYMBOLS
This chart is published by the Hydrographic Office, U.S. Navy, and is published by permission of the U.S. Navy.

EXPLANATIONS
This chart is published by the Hydrographic Office, U.S. Navy, and is published by permission of the U.S. Navy.

CONVERSION TABLES
This chart is published by the Hydrographic Office, U.S. Navy, and is published by permission of the U.S. Navy.

SCALE
This chart is published by the Hydrographic Office, U.S. Navy, and is published by permission of the U.S. Navy.

COAST AND SOUNDINGS
This chart is published by the Hydrographic Office, U.S. Navy, and is published by permission of the U.S. Navy.

WINDS AND CURRENTS
This chart is published by the Hydrographic Office, U.S. Navy, and is published by permission of the U.S. Navy.

TEMPERATURES
This chart is published by the Hydrographic Office, U.S. Navy, and is published by permission of the U.S. Navy.

ICE
This chart is published by the Hydrographic Office, U.S. Navy, and is published by permission of the U.S. Navy.

LIGHTS AND BUOYS
This chart is published by the Hydrographic Office, U.S. Navy, and is published by permission of the U.S. Navy.

RAILROADS
This chart is published by the Hydrographic Office, U.S. Navy, and is published by permission of the U.S. Navy.

ROADS
This chart is published by the Hydrographic Office, U.S. Navy, and is published by permission of the U.S. Navy.

POSSIBLE
This chart is published by the Hydrographic Office, U.S. Navy, and is published by permission of the U.S. Navy.

UNDEVELOPED
This chart is published by the Hydrographic Office, U.S. Navy, and is published by permission of the U.S. Navy.

WATER
This chart is published by the Hydrographic Office, U.S. Navy, and is published by permission of the U.S. Navy.

LAND
This chart is published by the Hydrographic Office, U.S. Navy, and is published by permission of the U.S. Navy.

ROCKS
This chart is published by the Hydrographic Office, U.S. Navy, and is published by permission of the U.S. Navy.

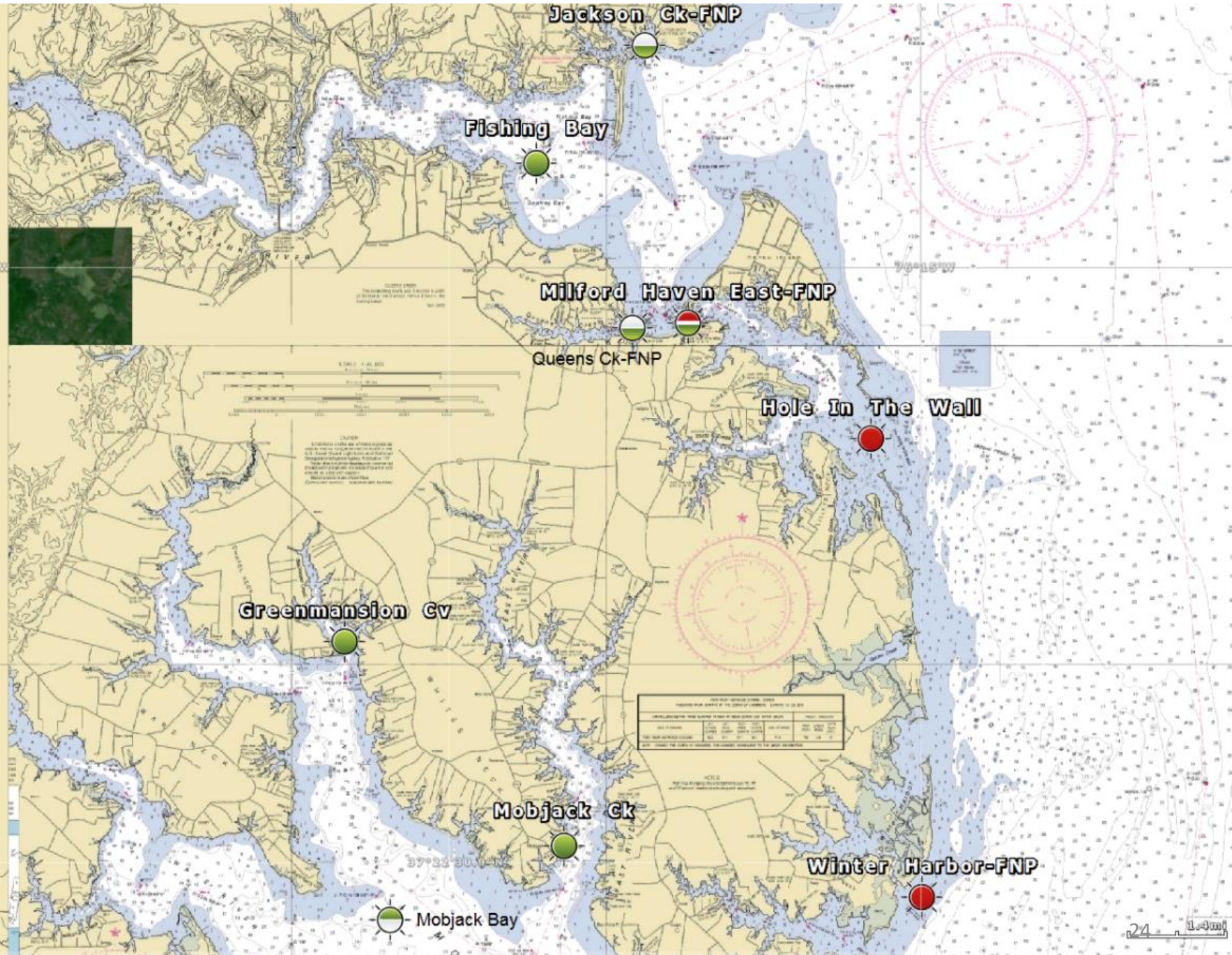
SHOALS
This chart is published by the Hydrographic Office, U.S. Navy, and is published by permission of the U.S. Navy.

REEFS
This chart is published by the Hydrographic Office, U.S. Navy, and is published by permission of the U.S. Navy.

BARREN
This chart is published by the Hydrographic Office, U.S. Navy, and is published by permission of the U.S. Navy.

WETLANDS
This chart is published by the Hydrographic Office, U.S. Navy, and is published by permission of the U.S. Navy.

SWAMP
This chart is published by the Hydrographic Office, U.S. Navy, and is published by permission of the U.S. Navy.



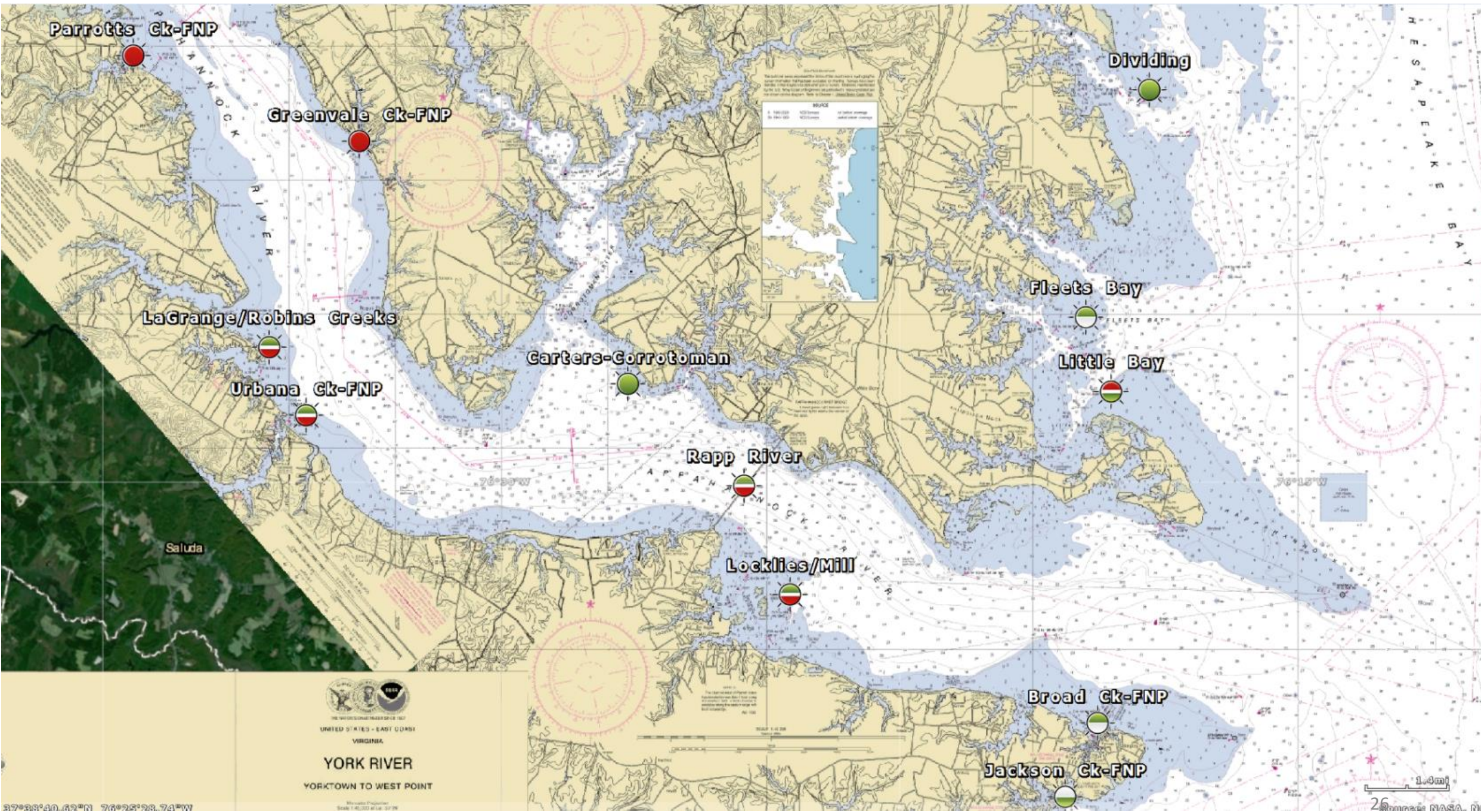
76°30'W

76°15'W

37°22'30.0"N

37°21'56"N 76°23'26.43"W

Virginia Chart L (read Southwest to Northeast traveling up the coast)			
Waterway (WW)	WW Type	Depth (ft)	Notes
Greenmason Cove (Mobjack Bay)	BW	10 to 5	No issues
Mobjack Bay*	BW	+6	There has been minor aid adjustments to mark best water within the bay
Mobjack Creek	Private	+6	No issues
Winter Harbor	FNP		All aids have been removed due to severe shoaling
Hole In The Wall	BW	8 to 2	Working with the local government to convey aids, there is severe shoaling within the waterway
Milford haven East	FNP	10	The Coast Guard will reevaluate aids relocation after scheduled dredging is complete
Queens Creek	FNP	6 to 8	The Coast Guard will reevaluate aids relocation after scheduled dredging is complete
Fishing Bay	BW	20+ to 5	No issues
Jackson Creek	FNP	7	The Coast Guard is reevaluating aids relocation after scheduled dredging was completed



76°23'40" W 37°23'20" N

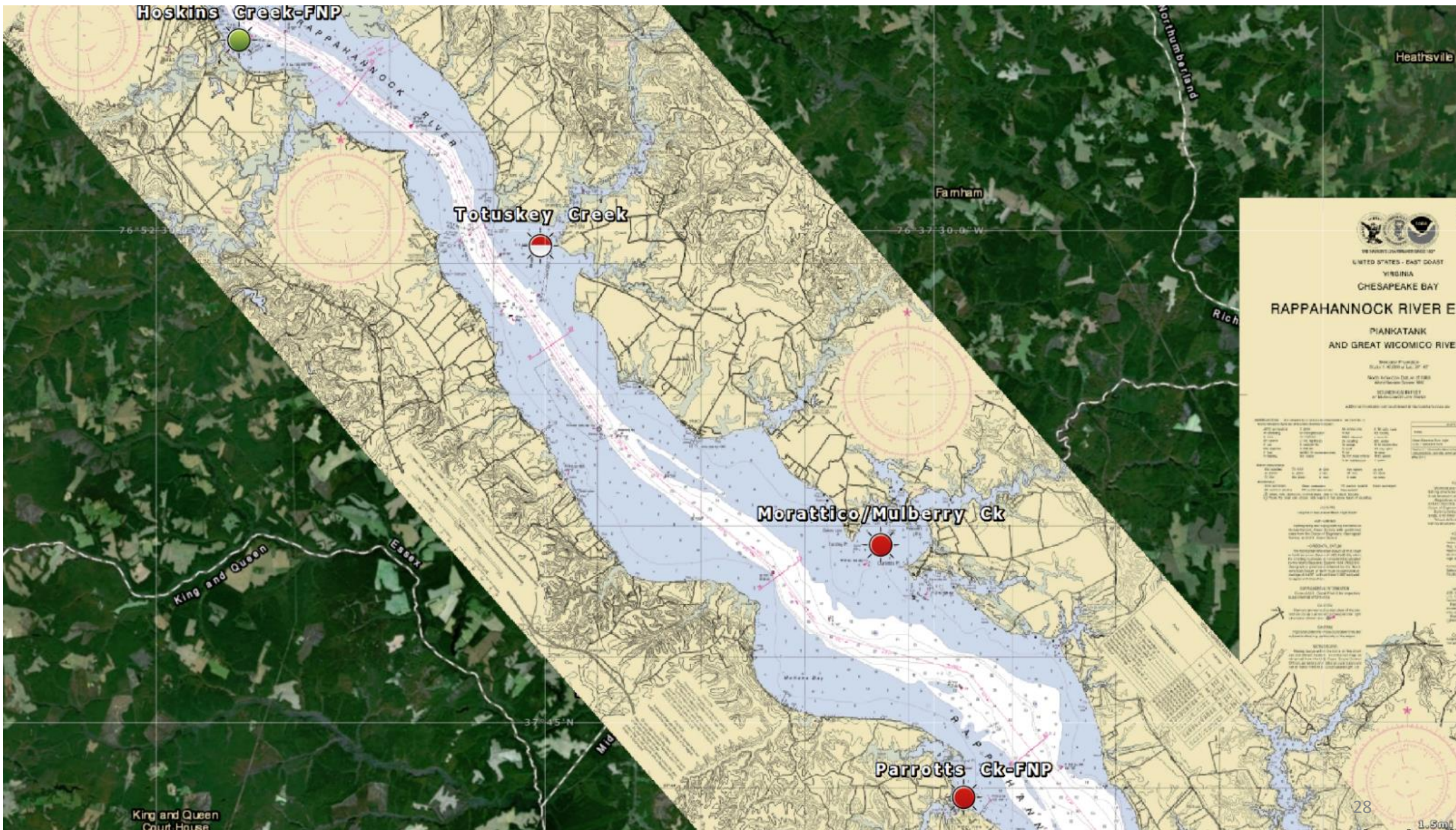
UNITED STATES - EAST COAST

 VIRGINIA

YORK RIVER

 YORKTOWN TO WEST POINT

Virginia Chart M (read Southeast to Northeast traveling up the coast)			
Waterway (WW)	WW Type	Depth (ft)	Notes
Jackson Creek	FNP	7	The Coast Guard is reevaluating aids relocation after scheduled dredging was completed
Broad Creek	FNP	8	The aids in this waterway were adjusted after last scheduled dredge but shoaling is already evident in several areas
Locklies/Mill Creeks	FNP/ BW	4	The cut thru FNP is maintained to 4' and the aids on either side mark best water
Rappahannock	FNP/ BW	+20 to 8	There is shoaling in upper portions of the waterway
Urbana Creek	FNP	8	There is shoaling at the end of the waterway and the waterway is under review
LaGrange/Robins Creeks	BW	10 to 5	The waterway's entrance aids is in good water but the end of the waterway is shoaled in
Parrotts Creek	FNP	6 to 4.7	Coast Guard assest cannot access all of the waterway due to shoaling
Greenvale Creek	FNP	6	Due to the waterway being shoaled in seven lateral daybeacons will be converted to Warning Daybeacons then removed
Carters-Corrotoman River	BW	30 to 6	No issues
Little Bay*	BW	6 to 26	Fish Traps located in entrance reduce the depth of the waterway entrance
Fleets Bay*	BW	+15 to 5	The waterway needs minor aid relocation and is under review
Dividing Creek	BW	18 to 6	No issues



UNITED STATES - EAST COAST
VIRGINIA
CHESAPEAKE BAY
RAPPAHANNOCK RIVER ESTUARY
PIANOKATANK
AND GREAT WICOMICO RIVER

Scale 1:62,500 or 1" = 1.0 mi
NAD 83 datum
Vertical datum: Mean Lower Low Water (MLLW)
Horizontal datum: NAD 83

SOUNDINGS		WINDS		TEMPERATURES	
Mean	Low	Force	Direction	Surface	Bottom
10	15	1	0	50	50
20	25	2	0	40	40
30	35	3	0	30	30
40	45	4	0	20	20
50	55	5	0	10	10
60	65	6	0	0	0
70	75	7	0		
80	85	8	0		
90	95	9	0		
100	105	10	0		
110	115	11	0		
120	125	12	0		
130	135	13	0		
140	145	14	0		
150	155	15	0		
160	165	16	0		
170	175	17	0		
180	185	18	0		
190	195	19	0		
200	205	20	0		
210	215	21	0		
220	225	22	0		
230	235	23	0		
240	245	24	0		
250	255	25	0		
260	265	26	0		
270	275	27	0		
280	285	28	0		
290	295	29	0		
300	305	30	0		

28

Virginia Chart N (read Southeast to Northeast traveling up the coast)			
Waterway (WW)	WW Type	Depth (ft)	Notes
Parrotts Creek	FNP	6 to 4.7	Coast Guard assest cannot access all of the waterway due to shoaling
Moratico/Mulberry Creek-	BW	4 to 12	Coast Guard assest cannot access all of the waterway due to shoaling
Totuskey Creek-	BW	4 to 8	Coast Guard assest cannot access all of the waterway due to shoaling and all structures past service life this Waterway is under Review
Hoskins Creek	FNP	10	This waterway recently was remarked and users have requested a rear range be rebuilt

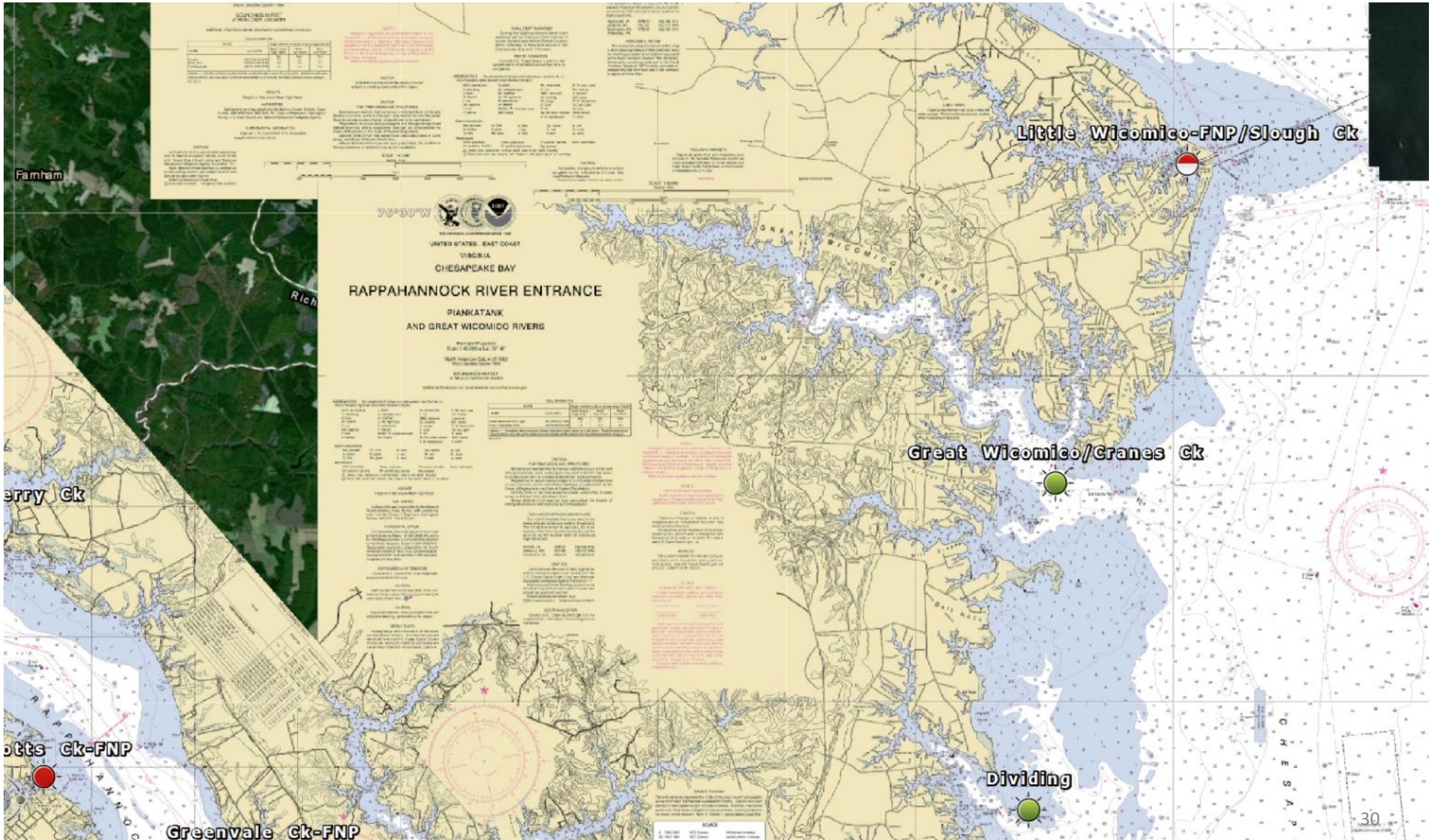


TABLE OF CONTENTS

Page	Description
1	General Information
2	Scale
3	Chart Symbols
4	Chart Symbols
5	Chart Symbols
6	Chart Symbols
7	Chart Symbols
8	Chart Symbols
9	Chart Symbols
10	Chart Symbols
11	Chart Symbols
12	Chart Symbols
13	Chart Symbols
14	Chart Symbols
15	Chart Symbols
16	Chart Symbols
17	Chart Symbols
18	Chart Symbols
19	Chart Symbols
20	Chart Symbols
21	Chart Symbols
22	Chart Symbols
23	Chart Symbols
24	Chart Symbols
25	Chart Symbols
26	Chart Symbols
27	Chart Symbols
28	Chart Symbols
29	Chart Symbols
30	Chart Symbols
31	Chart Symbols
32	Chart Symbols
33	Chart Symbols
34	Chart Symbols
35	Chart Symbols
36	Chart Symbols
37	Chart Symbols
38	Chart Symbols
39	Chart Symbols
40	Chart Symbols

76°30'W

UNITED STATES EAST COAST
VIRGINIA
CHEESAPEAKE BAY
RAPPAHANNOCK RIVER ENTRANCE
PIANKATANK
AND GREAT WICOMICO RIVERS

Geographic Position:
East 74°00'00" L., 37° 41'

NAVY: American Chart of 1982
Hydrographic Survey 1981

EDUCATIONAL SERVICE
NAVY: American Chart of 1982
Hydrographic Survey 1981

TABLE OF CONTENTS

Page	Description
1	General Information
2	Scale
3	Chart Symbols
4	Chart Symbols
5	Chart Symbols
6	Chart Symbols
7	Chart Symbols
8	Chart Symbols
9	Chart Symbols
10	Chart Symbols
11	Chart Symbols
12	Chart Symbols
13	Chart Symbols
14	Chart Symbols
15	Chart Symbols
16	Chart Symbols
17	Chart Symbols
18	Chart Symbols
19	Chart Symbols
20	Chart Symbols
21	Chart Symbols
22	Chart Symbols
23	Chart Symbols
24	Chart Symbols
25	Chart Symbols
26	Chart Symbols
27	Chart Symbols
28	Chart Symbols
29	Chart Symbols
30	Chart Symbols
31	Chart Symbols
32	Chart Symbols
33	Chart Symbols
34	Chart Symbols
35	Chart Symbols
36	Chart Symbols
37	Chart Symbols
38	Chart Symbols
39	Chart Symbols
40	Chart Symbols

NOTE: This chart is based on the latest available information and is subject to change without notice. It is not to be used for navigation unless it is accompanied by the appropriate notices to mariners.

NOTE: This chart is based on the latest available information and is subject to change without notice. It is not to be used for navigation unless it is accompanied by the appropriate notices to mariners.

NOTE: This chart is based on the latest available information and is subject to change without notice. It is not to be used for navigation unless it is accompanied by the appropriate notices to mariners.

CHEESAPEAKE

Virginia Chart O (read South to North traveling up the coast)			
Waterway (WW)	WW Type	Depth (ft)	Notes
Dividing Creek	BW	18 to 6	No issues
Great Wicomico River/Cranes Ck	BW	20+ to 6	No issues
Little Wicomico River/Slough Ck	FNP	8	Coast Guard asset can not access due to shoaling planned for review

Bonum Creek-FNP



Hague

Yeocomico River



Coan River



UNITED STATES - EAST COAST
MARYLAND - VIRGINIA

POTOMAC RIVER

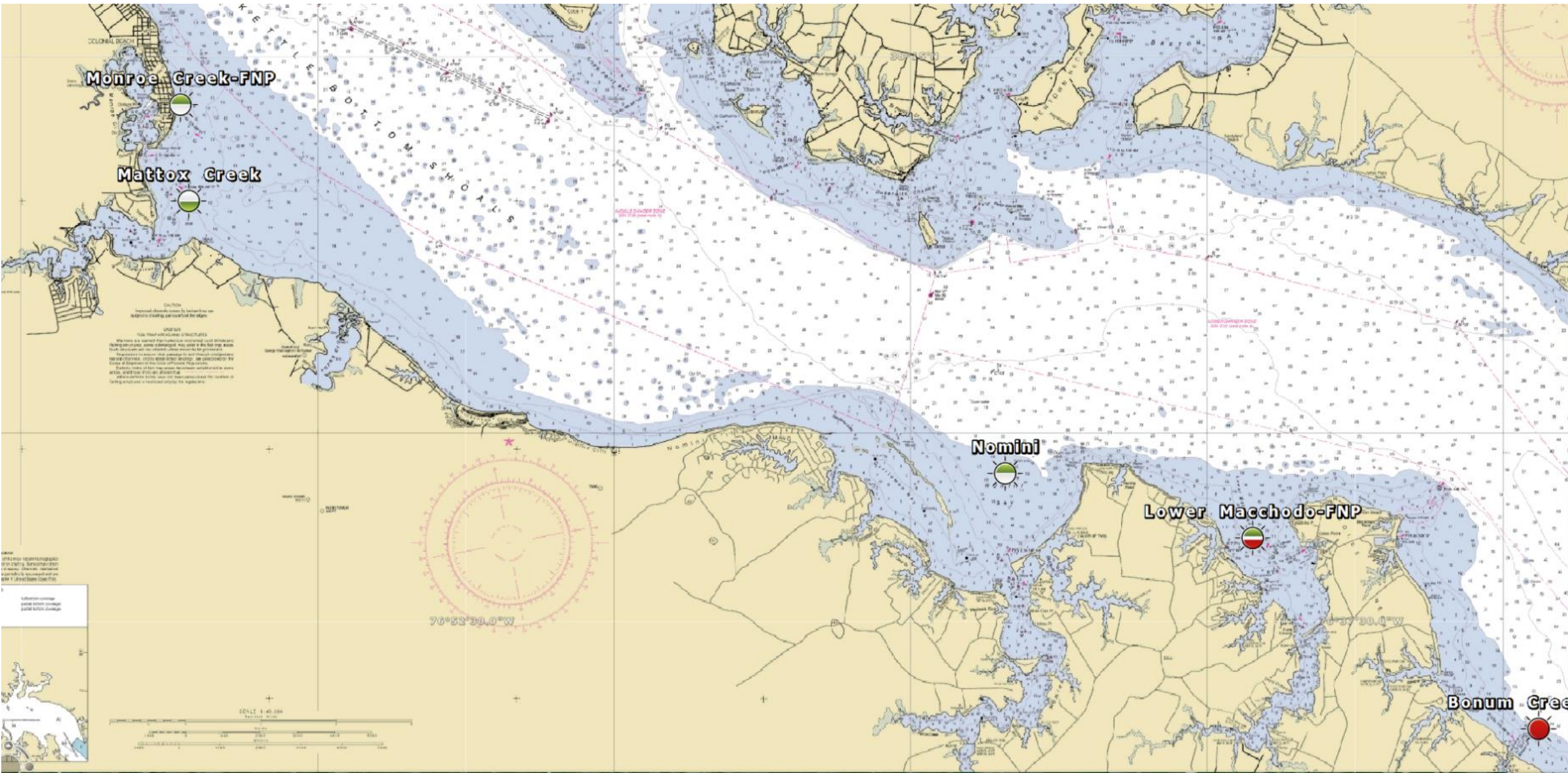
CHESAPEAKE BAY TO PINEY POINT

POTOMAC RIVER

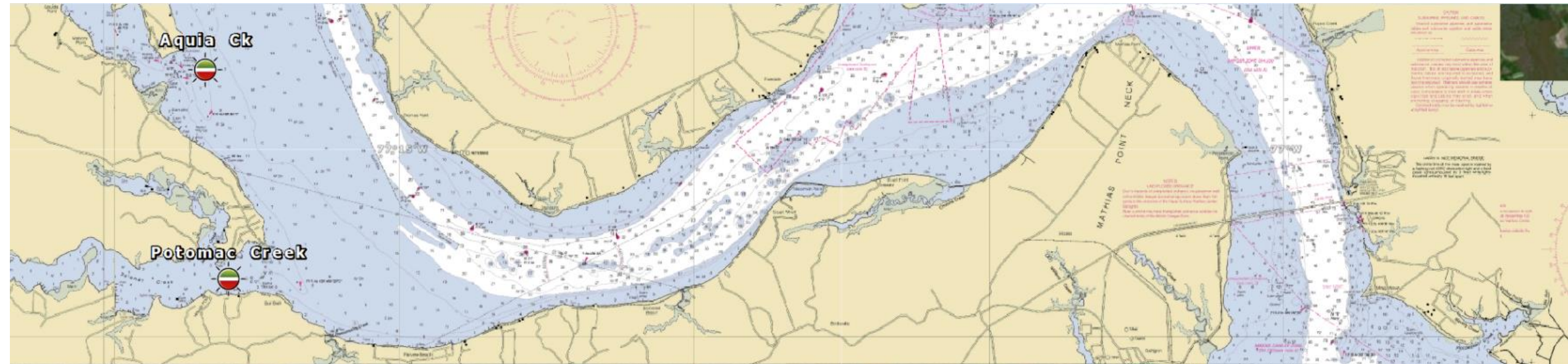
76°37'30.0"W

76°25'00.0"W

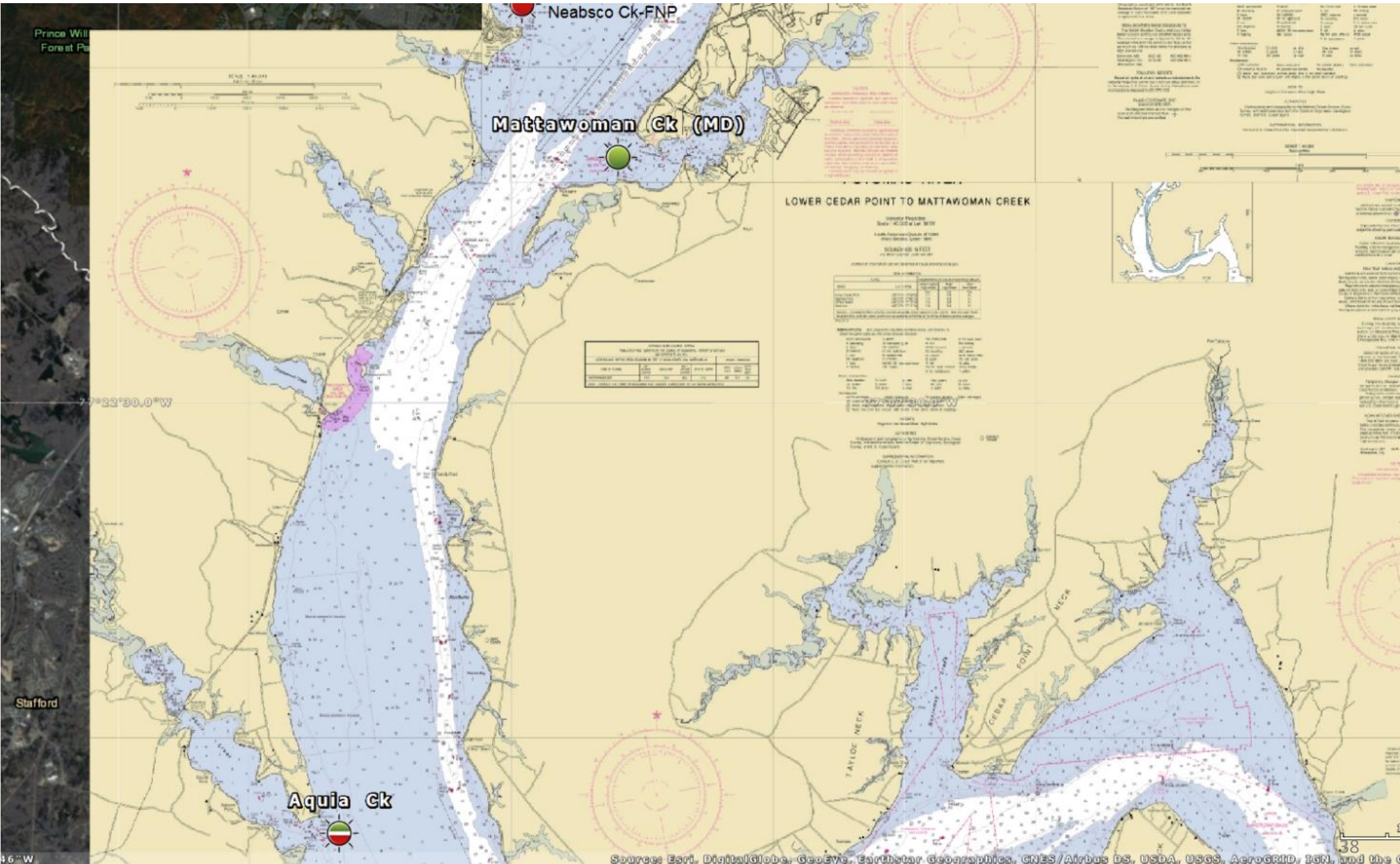
Virginia Chart P (read Southeast to Northwest traveling up the coast)			
Waterway (WW)	WW Type	Depth (ft)	Notes
Coan River	BW	15 to 5	This waterway has shoaling at the end
Yeocomico River*	BW	15 to 5	This waterway has good water and is under review for potential aid relocation
Bonum Creek (VA)	FNP	6	This waterway has severe shoaling all daybeacons have been converted to warning daybeacons and buoys removed



Virginia Chart Q (read Southeast to Northwest traveling up the coast)			
Waterway (WW)	WW Type	Depth (ft)	Notes
Bonum Creek (VA)	FNP	6	This waterway has severe shoaling all daybeacons have been converted to warning daybeacons and buoys removed
Lower Machodoc Ck	FNP/B W	11 to 3	This waterway has shoaling at the end
Nomini	FNP	9	This waterway has minor shoaling and is currently under review
Mattox Creek	BW	9 to 6	This waterway has good water but the entrance is narrowing
Monroe Ck	FNP	7	This waterway has good water but there is some shoaling in turning basin



Virginia Chart R (read Southeast to Northwest traveling up the coast)			
Waterway (WW)	WW Type	Depth (ft)	Notes
Monroe Ck	FNP	7	This waterway has good water but there is some shoaling in turning basin
Upper Machodoc Ck	FNP	5	This waterway is currently under review
Potomac Creek	BW	7 to 2	A light and seasonal buoys mark the enterance to this waterway and there is a review on discontinuing the remaining aids
Aquia Creek	BW	9 to 4	This waterway has shoaling at the end



Neabsco Ck-FNP

Mattawoman Ck (MD)

Aquia Ck

LOWER CEDAR POINT TO MATTAWOMAN CREEK

CHARTERED PROJECT
Scale: 1:50,000
DATE: 10/15/10
BY: [unreadable]

NO.	DATE	DESCRIPTION
1	10/15/10	Initial Survey
2	10/15/10	Final Survey

DEPTH	MEASUREMENT	DATE	BY
10	10/15/10	10/15/10	[unreadable]
15	10/15/10	10/15/10	[unreadable]
20	10/15/10	10/15/10	[unreadable]
25	10/15/10	10/15/10	[unreadable]
30	10/15/10	10/15/10	[unreadable]
35	10/15/10	10/15/10	[unreadable]
40	10/15/10	10/15/10	[unreadable]
45	10/15/10	10/15/10	[unreadable]
50	10/15/10	10/15/10	[unreadable]

Prince Will
Forest Pa

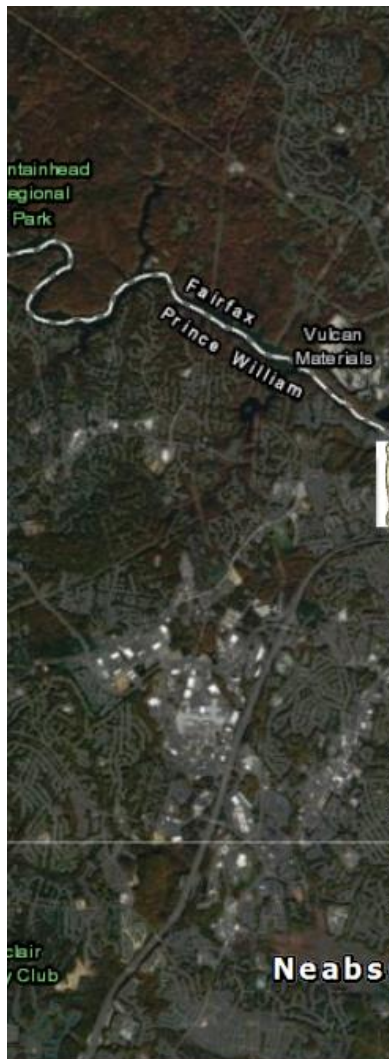
Stafford

77°22'30.0"W

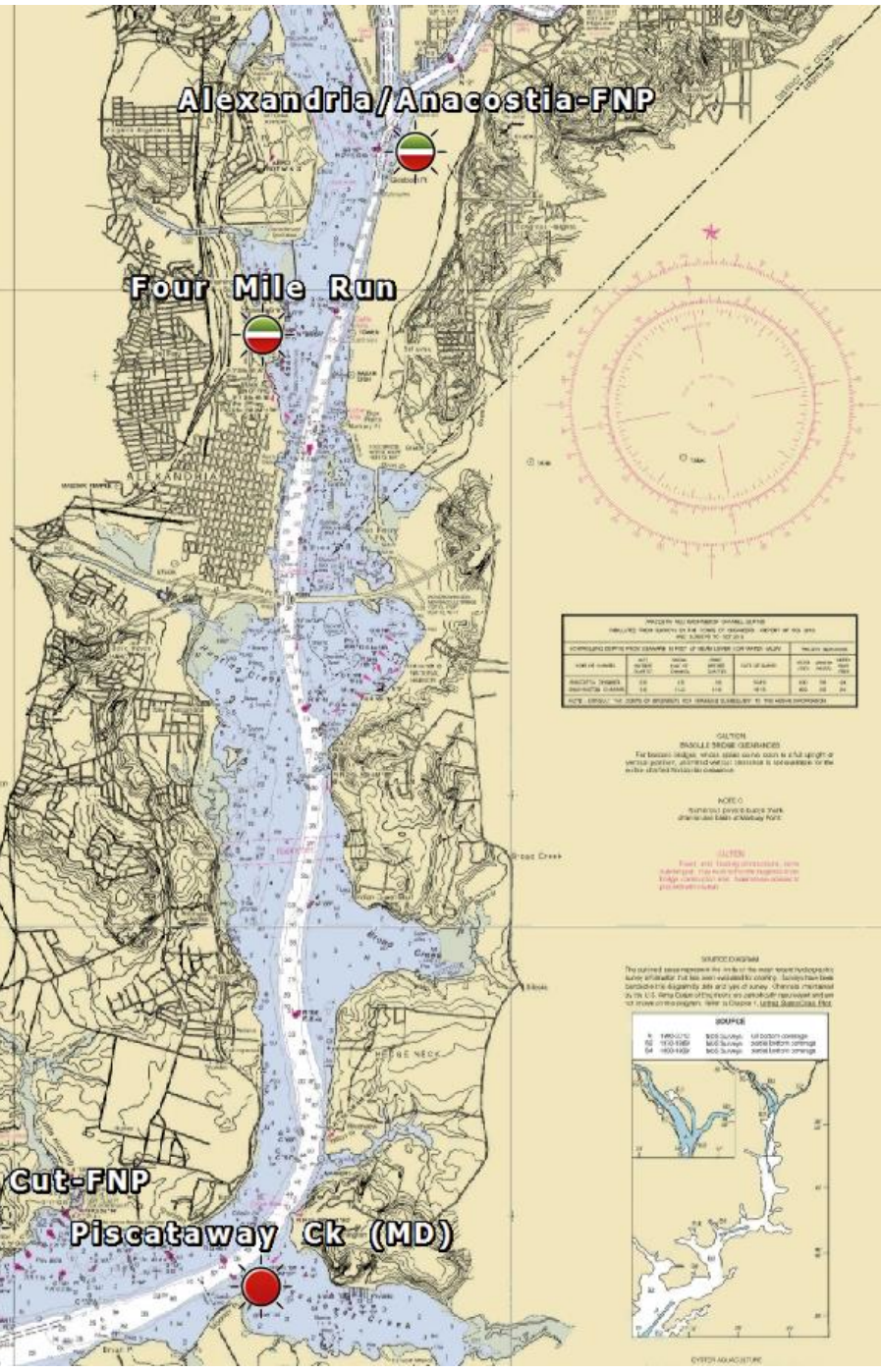
76°W

Sources: Esri, DigitalGlobe, GeoEye, Earthstar Geographics, CNES/Airbus DS, USDA, USGS, AeroGRID, IGN, and the

Virginia Chart S (read South to North traveling up the coast)			
Waterway (WW)	WW Type	Depth (ft)	Notes
Aquia Creek	BW	9 to 4	This waterway has shoaling at the end
Mattawoman Ck	BW/ MD	11 to 6	No issues
Neabsco Creek	FNP	5	The ACE reduced project depth to 5' and the waterway has severe shoaling. The entrance aids have been converted to WDBN's and will be removed after osprey season. The 2 seasonal aids were never re-established due to shoaling.



Virginia Chart T (read Southwest to Northeast traveling up the coast)			
Waterway (WW)	WW Type	Depth (ft)	Notes
Mattawoman Ck	BW/ MD	11 to 6	No issues (Maryland waterway)
Neabsco Creek	FNP	5	The ACE reduced project depth to 5' and the waterway has severe shoaling. The entrance aids have been converted to WDBN's and will be removed after osprey season. The 2 seasonal aids were never re-established due to shoaling.
Occoan Bay/Ch	FNP	9	This waterway has shoaling at the end
Mount Veron Cut	FNP	6	This waterway has good water and seasonal buoys
Piscataway Creek	BW/ MD	6	This waterway has severe shoaling and is under review (Maryland Waterway)



Virginia Chart U (read South to North traveling up the coast)			
Waterway (WW)	WW Type	Depth (ft)	Notes
Mount Vernon Cut	FNP	6	This waterway has good water and seasonal buoys
Piscataway Creek	BW/ MD	6	This waterway has severe shoaling and is under review (Maryland Waterway)
Washington Sailing Marina-Four Mile Run	FNP/ BW	8 to 6	This waterway has shoaling at the end
Alexandria/Anacostia Ch	FNP	24	This waterway has shoaling at several areas near the end

U.S. Department of
Homeland Security

United States
Coast Guard



Commander
Fifth Coast Guard District

431 Crawford Street
Portsmouth, VA 23704-5004
Staff Symbol: (dpw)
Phone: (757) 398-6230
Fax: (757) 398-6303
Chris.P.Scraba@uscg.mil

5760
June 6, 2018

Joe Schumacher
District Director
Office of Rep. Rob Wittman, VA-01
6501 Mechanicsville Turnpike, Suite 102
Mechanicsville, VA 23111

Dear Mr. Joe Schumacher,

I have received your email inquiry dated May 11, 2018 on federal Aids to navigation (ATON) in unstable, shoaled-in Virginia Waterways. We welcome the opportunity to discuss the Coast Guard's role in ensuring navigational safety and have attached enclosure (1) which is a visual representation of the federal aid assessment based on the degree of waterway stability within a specific Virginia waterway. This does not mean the Coast Guard will be removing these aids, it simply means these waterways are shoaled in where specified and normal access to our federal aids has been impeded.

The Coast Guard is committed to the safety of mariners and being able to safely mark navigable waterways throughout the country. However, accessibility to service aids by local Coast Guard Aids to Navigation Teams (ANT) and construction tenders is required to maintain a safe channel. The Coast Guard continues to work alongside our federal, state and local maritime partners and engage our waterway users regarding viability of waterways that are stable and of sufficient depth to provide a reliable navigation system. We will continue to work diligently to provide timely notification to local mariners and port partners when the known conditions of waterway enables us to do so.

Our responsibility is to safely protect the mariner by best marking the waterways and removing any hazards that could mislead and potentially injure the mariner. In these instances where navigable waterways have been impeded beyond properly marking safe water, the local ANT may have to discontinue the federal aids and mariners are cautioned to proceed at their own risk due to the shallow water depths. I understand that local residents become concerned when federal aids are removed from an unstable waterway, and this is only done in urgent circumstance when all other options have been attempted. Private Aids to Navigation is another option if the waterway is too shallow for federal aids or local officials working closely with the U.S. Army Corps of Engineers (USACE) on the likelihood a waterway receiving future federal funding for dredging. In Virginia localities where county waterway commissions have been created, such as the Eastern Shore Regional Navigable Waterways Committee and the recently formed Matthews County Waterways Committee, the Coast Guard and USACE have been able to successfully work alongside county Board of Supervisors and waterway officials to discuss federal aid and dredging priorities in a constructive and transparent manner. These groups have become great examples of working together to find solutions to resolve waterway issues with our state and local partners in a more coordinated manner.

Your unwavering commitment to navigation safety and the advocacy for mariners and maritime small businesses in your district is truly appreciated, and I thank you for your ongoing positive efforts to reach out to me with your federal aid concerns on behalf of numerous Virginia counties. I look forward to continuing our collaboration to ensure mariners operating vessels on Virginia's waters stay safe and that the Coast Guard can maintain the navigation safety of these waterways. Please do not hesitate to contact me should you have any more questions or concerns.

Sincerely,



C. P. SCRABA
Acting Chief, Waterways Branch
U.S. Coast Guard
By Direction

Enclosure (1): U.S. Coast Guard's Federal ATON Assessment of Virginia Waterways

Copy: CG Sector Hampton Roads
Virginia Harbor Safety Committee